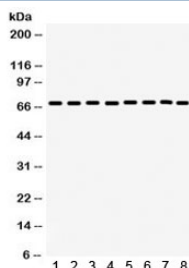


SHP-2 Antibody / PTPN11 (R32193)

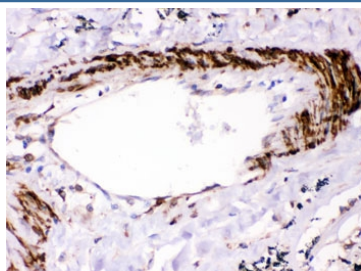
Catalog No.	Formulation	Size
R32193	0.5mg/ml if reconstituted with 0.2ml sterile DI water	100 ug

Bulk quote request

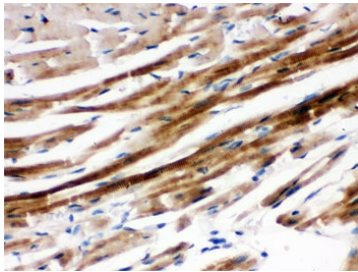
Availability	1-3 business days
Species Reactivity	Human, Mouse, Rat
Format	Antigen affinity purified
Clonality	Polyclonal (rabbit origin)
Isotype	Rabbit IgG
Purity	Antigen affinity
Buffer	Lyophilized from 1X PBS with 2.5% BSA and 0.025% sodium azide
UniProt	Q06124
Applications	Western Blot : 0.1-0.5ug/ml IHC (FFPE) : 0.5-1ug/ml
Limitations	This SHP-2 antibody is available for research use only.



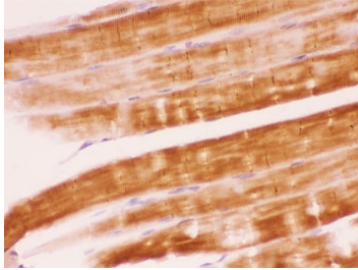
Western blot testing of 1) rat brain, 2) mouse brain, 3) rat heart, 4) mouse kidney, human 5) HeLa, 6) SW620, 7) HepG2 and 8) Jurkat lysate with SHP-2 antibody.
Expected/observed molecular weight: ~68 kDa.



IHC testing of FFPE human lung cancer with SHP-2 antibody. HIER: Boil the paraffin sections in pH 6, 10mM citrate buffer for 20 minutes and allow to cool prior to staining.



IHC testing of FFPE mouse heart with SHP-2 antibody. HIER: Boil the paraffin sections in pH 6, 10mM citrate buffer for 20 minutes and allow to cool prior to staining.



IHC testing of FFPE rat skeletal muscle with SHP-2 antibody. HIER: Boil the paraffin sections in pH 6, 10mM citrate buffer for 20 minutes and allow to cool prior to staining.

Description

PTPN11 (Tyrosine-protein phosphatase non-receptor type 11), also known as protein-tyrosine phosphatase 1D (PTP-1D), protein-tyrosine phosphatase 2C (PTP-2C), TYROSINE PHOSPHATASE SHP2 (SHP2), BPTP3, SH-PTP2, SHP-2, SH-PTP3, is an enzyme that in humans is encoded by the PTPN11 gene. PTPN11 is a member of the protein tyrosine phosphatase (PTP) family. The open reading frame consists of 1,779 nucleotides potentially encoding a protein of 593 amino acids with a predicted molecular mass of 68 kD. PTPs are known to be signaling molecules that regulate a variety of cellular processes including cell growth, differentiation, mitotic cycle, and oncogenic transformation. This PTP contains two tandem Src homology-2 domains, which function as phospho-tyrosine binding domains and mediate the interaction of this PTP with its substrates. This PTP is widely expressed in most tissues and plays a regulatory role in various cell signaling events that are important for a diversity of cell functions, such as mitogenic activation, metabolic control, transcription regulation, and cell migration. Mutations in this gene are a cause of Noonan syndrome as well as acute myeloid leukemia.

Application Notes

Optimal dilution of the SHP-2 antibody should be determined by the researcher.

Immunogen

Amino acids EKFATLAELVQYYMEHHGQLKEKNGDVIELK of human SHP2/PTPN11 were used as the immunogen for the SHP-2 antibody.

Storage

After reconstitution, the SHP-2 antibody can be stored for up to one month at 4°C. For long-term, aliquot and store at -20°C. Avoid repeated freezing and thawing.

