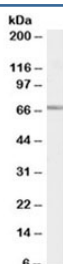


SHP-1 Antibody / PTPN6 (R34303)

Catalog No.	Formulation	Size
R34303-100UG	0.5 mg/ml in 1X TBS, pH7.3, with 0.5% BSA (US sourced) and 0.02% sodium azide	100 ug

[Bulk quote request](#)

Availability	1-3 business days
Species Reactivity	Human
Format	Antigen affinity purified
Clonality	Polyclonal (goat origin)
Isotype	Goat Ig
Purity	Antigen affinity
Gene ID	5777
Applications	Western Blot : 0.2-0.5ug/ml ELISA (peptide) LOD : 1:128000
Limitations	This SHP-1 antibody is available for research use only.



Western blot testing of Jurkat cell lysate with SHP-1 antibody at 0.2ug/ml. Predicted molecular weight: ~68kDa.

Description

Additional name(s) for this target protein: Protein tyrosine phosphatase, non-receptor type 6, HCP, Hematopoietic cell phosphatase; PTPN6

Application Notes

Optimal dilution of the SHP-1 antibody should be determined by the researcher.

Immunogen

Amino acids HTKNKREEKVKKQ were used as the immunogen for this SHP-1 antibody.

Storage

Aliquot and store the SHP-1 antibody at -20oC.