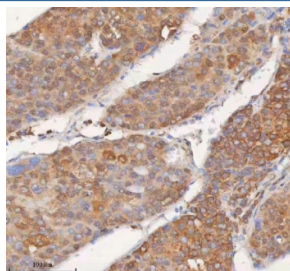


SHKBP1 Antibody / SH3KBP1-binding protein 1 / SETA-binding protein 1 / SB1 (RQ8648)

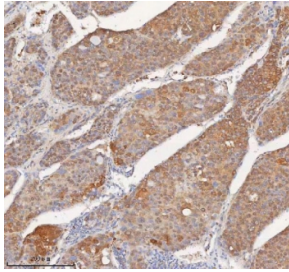
Catalog No.	Formulation	Size
RQ8648	0.5mg/ml if reconstituted with 0.2ml sterile DI water	100 ug

[Bulk quote request](#)

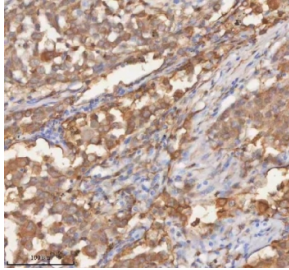
Availability	1-3 days
Species Reactivity	Human
Format	Antigen affinity purified
Clonality	Polyclonal (rabbit origin)
Isotype	Rabbit IgG
Purity	Antigen affinity chromatography
Buffer	Lyophilized from 1X PBS with 2% Trehalose
UniProt	Q8TBC3
Localization	Cytoplasm (lysosome)
Applications	Western Blot : 1-2ug/ml Immunohistochemistry (FFPE) : 2-5ug/ml Flow Cytometry : 1-3ug/million cells ELISA : 0.1-0.5ug/ml
Limitations	This SHKBP1 antibody is available for research use only.



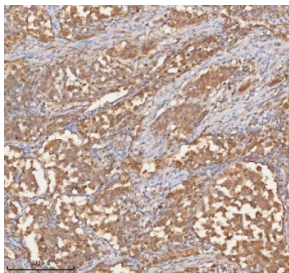
IHC staining of FFPE human liver cancer tissue with SHKBP1 antibody. HIER: boil tissue sections in pH8 EDTA for 20 min and allow to cool before testing.



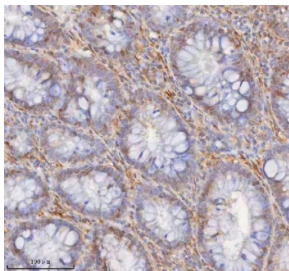
IHC staining of FFPE human liver cancer tissue with SHKBP1 antibody. HIER: boil tissue sections in pH8 EDTA for 20 min and allow to cool before testing.



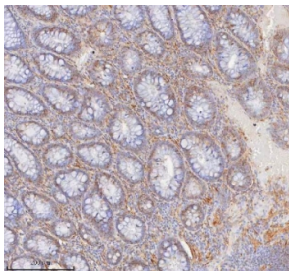
IHC staining of FFPE human lung adenocarcinoma tissue with SHKBP1 antibody. HIER: boil tissue sections in pH8 EDTA for 20 min and allow to cool before testing.



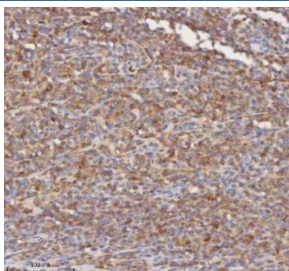
IHC staining of FFPE human lung adenocarcinoma tissue with SHKBP1 antibody. HIER: boil tissue sections in pH8 EDTA for 20 min and allow to cool before testing.



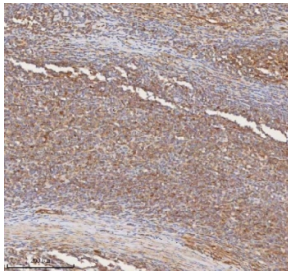
IHC staining of FFPE human colon tissue with SHKBP1 antibody. HIER: boil tissue sections in pH8 EDTA for 20 min and allow to cool before testing.



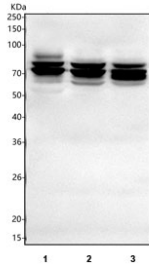
IHC staining of FFPE human colon tissue with SHKBP1 antibody. HIER: boil tissue sections in pH8 EDTA for 20 min and allow to cool before testing.



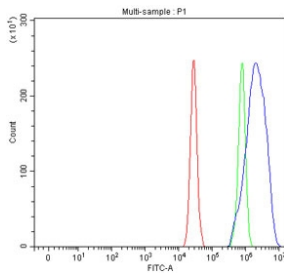
IHC staining of FFPE diffuse large B-cell lymphoma of human intestine tissue with SHKBP1 antibody. HIER: boil tissue sections in pH8 EDTA for 20 min and allow to cool before testing.



IHC staining of FFPE diffuse large B-cell lymphoma of human intestine tissue with SHKBP1 antibody. HIER: boil tissue sections in pH8 EDTA for 20 min and allow to cool before testing.



Western blot testing of human 1) A549, 2) HEL and 3) U-251 cell lysate with SHKBP1 antibody. Predicted molecular weight ~76 kDa.



Flow cytometry testing of fixed and permeabilized human A549 cells with SHKBP1 antibody at 1ug/million cells (blocked with goat sera); Red=cells alone, Green=isotype control, Blue= SHKBP1 antibody.

Description

SHKBP1, also called SH3KBP1-binding protein 1, SETA-binding protein 1 and SB1, plays a role in lysosomal enzyme-dependent apoptosis and in regulating degradation of activated cell surface receptors.

Application Notes

Optimal dilution of the SHKBP1 antibody should be determined by the researcher.

Immunogen

An E.coli-derived human recombinant protein (amino acids Y129-F707) was used as the immunogen for the SHKBP1 antibody.

Storage

After reconstitution, the SHKBP1 Antibody can be stored for up to one month at 4oC. For long-term, aliquot and store at -20oC. Avoid repeated freezing and thawing.