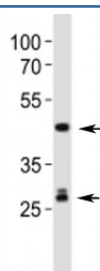


Shh Antibody / Sonic Hedgehog (F53068)

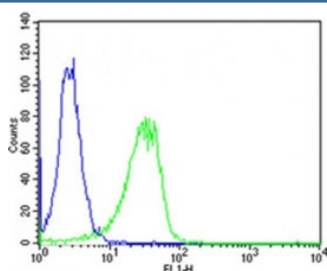
Catalog No.	Formulation	Size
F53068-0.4ML	In 1X PBS, pH 7.4, with 0.09% sodium azide	0.4 ml
F53068-0.08ML	In 1X PBS, pH 7.4, with 0.09% sodium azide	0.08 ml

Bulk quote request

Availability	1-3 business days
Species Reactivity	Human, Mouse
Format	Antigen affinity purified
Clonality	Polyclonal (rabbit origin)
Isotype	Rabbit Ig
Purity	Antigen affinity
UniProt	Q62226
Applications	Flow Cytometry : 1:25 Western Blot : 1:1000 (1)
Limitations	This Shh antibody is available for research use only.



Western blot analysis of lysate from mouse liver tissue lysate using Shh antibody.
Predicted molecular weight: 45/27/19 kDa (1)



Flow cytometric analysis of HeLa cells using Shh antibody (green) compared to an isotype control of rabbit IgG (blue); Ab was diluted at 1:25 dilution. An Alexa Fluor 488 goat anti-rabbit IgG was used as the secondary Ab.

Description

Sonic hedgehog binds to the patched (PTC) receptor, which functions in association with smoothened (SMO), to activate the transcription of target genes. In the absence of SHH, PTC represses the constitutive signaling activity of SMO.

Application Notes

Titration of the Shh antibody may be required due to differences in protocols and secondary/substrate sensitivity.

1. The 45 kDa precursor protein autocleaves into 27 kDa amino and 19 kDa carboxy fragments.

Immunogen

A portion of amino acids 395-450 were used as immunogen for this Shh antibody.

Storage

Aliquot the Shh antibody and store frozen at -20oC or colder. Avoid repeated freeze-thaw cycles.