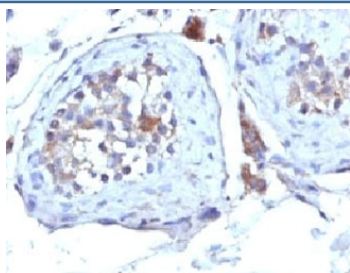


SHBG Antibody [clone SHBG/245] (V2853)

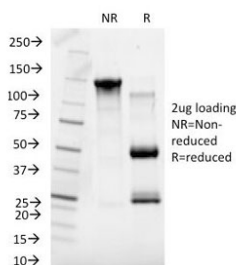
Catalog No.	Formulation	Size
V2853-100UG	0.2 mg/ml in 1X PBS with 0.1 mg/ml BSA (US sourced) and 0.05% sodium azide	100 ug
V2853-20UG	0.2 mg/ml in 1X PBS with 0.1 mg/ml BSA (US sourced) and 0.05% sodium azide	20 ug
V2853SAF-100UG	1 mg/ml in 1X PBS; BSA free, sodium azide free	100 ug
V2853IHC-7ML	Prediluted in 1X PBS with 0.1 mg/ml BSA (US sourced) and 0.05% sodium azide; *For IHC use only*	7 ml

Bulk quote request

Availability	1-3 business days
Species Reactivity	Human
Format	Purified
Clonality	Monoclonal (mouse origin)
Isotype	Mouse IgG1, kappa
Clone Name	SHBG/245
Purity	Protein G affinity chromatography
UniProt	P04278
Localization	Cytoplasmic & extracellular (secreted)
Applications	ELISA : order BSA/sodium azide-free format for coating Immunohistochemistry (FFPE) : 1-2ug/ml for 30 min at RT
Limitations	This SHBG antibody is available for research use only.



IHC: Formalin-fixed, paraffin-embedded human testicular carcinoma stained with SHBG antibody (clone SHBG/245).



SDS-PAGE Analysis of Purified, BSA-Free SHBG Antibody (clone SHBG/245).
Confirmation of Integrity and Purity of the Antibody.

Description

Recognizes a protein of 45kDa, identified as SHBG. It functions as an androgen transport protein, but may also be involved in receptor-mediated processes. Each dimer binds one molecule of steroid. It is specific for 5-alpha-dihydrotestosterone, testosterone, and 17-beta-estradiol. SHBG regulates the plasma metabolic clearance rate of steroid hormones by controlling their plasma concentration. In testis, it is synthesized by the Sertoli cells, secreted into the lumen of the seminiferous tubule and transported to the epididymis.

Application Notes

Optimal dilution of the SHBG antibody should be determined by the researcher.

1. Staining of formalin-fixed tissues requires boiling tissue sections in 10mM Tris buffer with 1mM EDTA, pH 9, for 10-20 min followed by cooling at RT for 20 min.
2. The prediluted format is supplied in a dropper bottle and is optimized for use in IHC. After epitope retrieval step (if required), drip mAb solution onto the tissue section and incubate at RT for 30 min.

Immunogen

Recombinant full-length human protein was used as the immunogen for the SHBG antibody.

Storage

Store the SHBG antibody at 2-8oC (with azide) or aliquot and store at -20oC or colder (without azide).