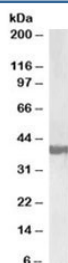


## SH3GL2 Antibody / Endophilin A1 (R35957)

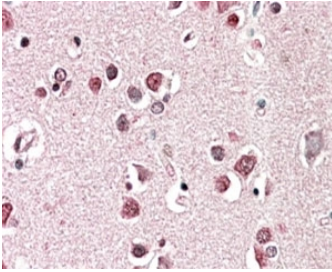
Catalog No.	Formulation	Size
R35957-100UG	0.5 mg/ml in 1X TBS, pH7.3, with 0.5% BSA (US sourced) and 0.02% sodium azide	100 ug

[Bulk quote request](#)

Availability	1-3 business days
Species Reactivity	Human
Predicted Reactivity	Pig
Format	Antigen affinity purified
Clonality	Polyclonal (goat origin)
Isotype	Goat Ig
Purity	Antigen affinity
UniProt	Q99962
Gene ID	6456
Applications	Western Blot : 0.3-1ug/ml Immunohistochemistry (FFPE) : 5-10ug/ml ELISA (peptide) LOD : 1:64000
Limitations	This SH3GL2 antibody is available for research use only.



Western blot testing of human frontal cortex lysate with SH3GL2 antibody at 0.3ug/ml.  
Predicted molecular weight: ~40 kDa.



IHC staining of FFPE human cerebral cortex with SH3GL2 antibody at 5ug/ml. HIER: steamed with pH6 citrate buffer, AP-staining.

## Description

Additional name(s) for this target protein: SH3-domain GRB2-like 2; endophilin

## Application Notes

Optimal dilution of the SH3GL2 antibody should be determined by the researcher.

## Immunogen

Amino acids SLEFPTGDSTQPN were used as the immunogen for this SH3GL2 antibody.

## Storage

Aliquot and store the SH3GL2 antibody at -20oC.