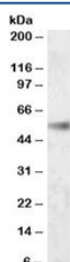


## SH2D4A Antibody (R34257)

Catalog No.	Formulation	Size
R34257-100UG	0.5 mg/ml in 1X TBS, pH7.3, with 0.5% BSA (US sourced) and 0.02% sodium azide	100 ug

[Bulk quote request](#)

Availability	1-3 business days
Species Reactivity	Human
Predicted Reactivity	Dog
Format	Antigen affinity purified
Clonality	Polyclonal (goat origin)
Isotype	Goat Ig
Purity	Antigen affinity
Gene ID	63898
Applications	Western Blot : 0.1-0.3ug/ml ELISA (peptide) LOD : 1:1000
Limitations	This SH2D4A antibody is available for research use only.



Western blot testing of human kidney lysate with SH2D4A antibody at 0.1ug/ml.  
Predicted molecular weight: ~53kDa.

## Description

Additional name(s) for this target protein: SH2 domain containing 4A

## Application Notes

Optimal dilution of the SH2D4A antibody should be determined by the researcher.

## Immunogen

Amino acids HQKKESMKKKQDE were used as the immunogen for this SH2D4A antibody.

## Storage

Aliquot and store the SH2D4A antibody at -20oC.