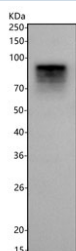
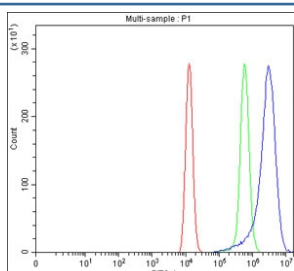


SH2D3C Antibody / SH2 domain-containing protein 3C / Chat-H (RQ8750)

Catalog No.	Formulation	Size
RQ8750	0.5mg/ml if reconstituted with 0.2ml sterile DI water	100 ug

Bulk quote request

Availability	1-3 days
Species Reactivity	Human
Format	Antigen affinity purified
Clonality	Polyclonal (rabbit origin)
Isotype	Rabbit IgG
Purity	Antigen affinity chromatography
Buffer	Lyophilized from 1X PBS with 2% Trehalose
UniProt	Q8N5H7
Applications	Western Blot : 1-2ug/ml Flow Cytometry : 1-3ug/million cells ELISA : 0.1-0.5ug/ml
Limitations	This SH2D3C antibody is available for research use only.



Description

SH2 domain containing 3C, also known as SH2D3C, is a protein that in humans is encoded by the SH2D3C gene. This gene encodes an adaptor protein and member of a cytoplasmic protein family involved in cell migration. The encoded protein contains a putative Src homology 2 (SH2) domain and guanine nucleotide exchange factor-like domain which allows this signaling protein to form a complex with scaffolding protein Crk-associated substrate. Multiple transcript variants encoding different isoforms have been found for this gene.

Application Notes

Optimal dilution of the SH2D3C antibody should be determined by the researcher.

Immunogen

An E.coli-derived human recombinant protein (amino acids D48-H789) was used as the immunogen for the SH2D3C antibody.

Storage

After reconstitution, the SH2D3C Antibody can be stored for up to one month at 4oC. For long-term, aliquot and store at -20oC. Avoid repeated freezing and thawing.