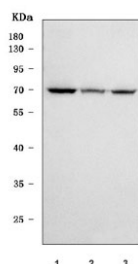


## SGSH Antibody / N-sulphoglucosamine sulphohydrolase / HSS (RQ7802)

Catalog No.	Formulation	Size
RQ7802	0.5mg/ml if reconstituted with 0.2ml sterile DI water	100 ug

**Bulk quote request**

<b>Availability</b>	1-3 business days
<b>Species Reactivity</b>	Human
<b>Format</b>	Antigen affinity purified
<b>Clonality</b>	Polyclonal (rabbit origin)
<b>Isotype</b>	Rabbit IgG
<b>Purity</b>	Antigen affinity purified
<b>Buffer</b>	Lyophilized from 1X PBS with 2% Trehalose
<b>UniProt</b>	P51688
<b>Applications</b>	Western Blot : 0.5-1ug/ml Direct ELISA : 0.1-0.5ug/ml
<b>Limitations</b>	This SGSH antibody is available for research use only.



Western blot testing of human 1) HepG2, 2) MCF7 and 3) 293T cell lysate with SGSH antibody. Predicted molecular weight ~56 kDa but may be observed at higher molecular weights due to glycosylation.

### Description

N-sulphoglucosamine sulphohydrolase is an enzyme that in humans is encoded by the SGSH gene. This gene encodes the enzyme sulfamidase; one of several enzymes involved in the lysosomal degradation of heparan sulfate. Mutations in this gene are associated with the lysosomal storage disease mucopolysaccharidosis IIIA, also known as Sanfilippo syndrome A, which results from impaired degradation of heparan sulfate. Transcripts of varying sizes have been reported but their biological validity has not been determined.

### Application Notes

Optimal dilution of the SGSH antibody should be determined by the researcher.

## **Immunogen**

E. coli-derived recombinant human protein (amino acids R206-L502) was used as the immunogen for the SGSH antibody.

## **Storage**

After reconstitution, the SGSH antibody can be stored for up to one month at 4oC. For long-term, aliquot and store at -20oC. Avoid repeated freezing and thawing.