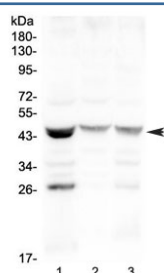


SFTPb Antibody / Pulmonary surfactant-associated protein B (RQ4213)

| Catalog No. | Formulation | Size |
|-------------|---|--------|
| RQ4213 | 0.5mg/ml if reconstituted with 0.2ml sterile DI water | 100 ug |

Bulk quote request

| | |
|-----------------------------|---|
| Availability | 1-3 business days |
| Species Reactivity | Human |
| Predicted Reactivity | Mouse, Rat |
| Format | Antigen affinity purified |
| Clonality | Polyclonal (rabbit origin) |
| Isotype | Rabbit IgG |
| Purity | Antigen affinity purified |
| Buffer | Lyophilized from 1X PBS with 2% Trehalose and 0.025% sodium azide |
| UniProt | P07988 |
| Applications | Western Blot : 0.5-1ug/ml |
| Limitations | This SFTPb antibody is available for research use only. |



Western blot testing of human 1) MCF7, 2) COLO320 and 3) HepG2 cell lysate with SFTPb antibody at 0.5ug/ml. Predicted molecular weight ~42 kDa.

Description

Pulmonary surfactant-associated protein B is a protein that in humans is encoded by the SFTPb gene. This gene encodes the pulmonary-associated surfactant protein B (SPB), an amphipathic surfactant protein essential for lung function and homeostasis after birth. Pulmonary surfactant is a surface-active lipoprotein complex composed of 90% lipids and 10% proteins which include plasma proteins and apolipoproteins SPA, SPB, SPC and SPD. The surfactant is secreted by the alveolar cells of the lung and maintains the stability of pulmonary tissue by reducing the surface tension of fluids that coat the lung. The SPB enhances the rate of spreading and increases the stability of surfactant monolayers in vitro. Multiple mutations in this gene have been identified, which cause pulmonary surfactant metabolism dysfunction

type 1, also called pulmonary alveolar proteinosis due to surfactant protein B deficiency, and are associated with fatal respiratory distress in the neonatal period. Alternatively spliced transcript variants encoding the same protein have been identified.

Application Notes

Optimal dilution of the SFTPb antibody should be determined by the researcher.

Immunogen

Amino acids QCLAERYSVILLDTLLGRMLPQLVCRLVLR were used as the immunogen for the SFTPb antibody.

Storage

After reconstitution, the SFTPb antibody can be stored for up to one month at 4°C. For long-term, aliquot and store at -20°C. Avoid repeated freezing and thawing.