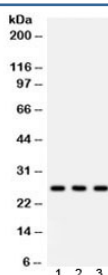


SFTPA1/2 Antibody (R32279)

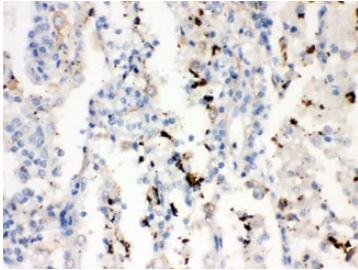
Catalog No.	Formulation	Size
R32279	0.5mg/ml if reconstituted with 0.2ml sterile DI water	100 ug

Bulk quote request

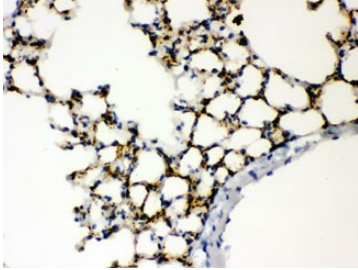
Availability	1-3 business days
Species Reactivity	Human, Mouse, Rat
Format	Antigen affinity purified
Clonality	Polyclonal (rabbit origin)
Isotype	Rabbit IgG
Purity	Antigen affinity
Buffer	Lyophilized from 1X PBS with 2.5% BSA and 0.025% sodium azide
UniProt	Q8IWL1 / Q8IWL2
Localization	Cytoplasmic, membranous, secreted
Applications	Western Blot : 0.1-0.5ug/ml Immunohistochemistry (FFPE) : 0.5-1ug/ml Immunohistochemistry (Frozen) : 0.5-1ug/ml Immunofluorescence : 5ug/ml
Limitations	This SFTPA1/2 antibody is available for research use only.



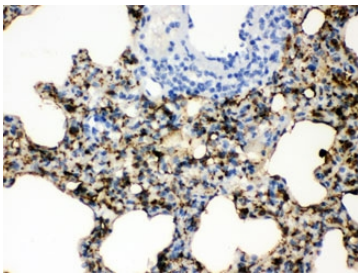
Western blot testing of 1) rat lung, 2) mouse lung, 3) A549 lysate with SFTPA1/2 antibody. Predicted molecular weight: ~26 kDa but may be observed at higher molecular weights due to glycosylation.



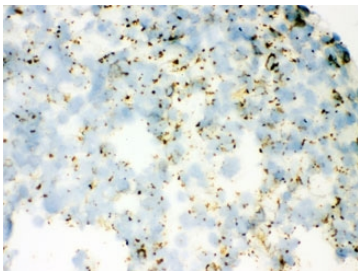
IHC testing of FFPE human lung cancer with SFTPA1/2 antibody. HIER: Boil the paraffin sections in pH 6, 10mM citrate buffer for 20 minutes and allow to cool prior to staining.



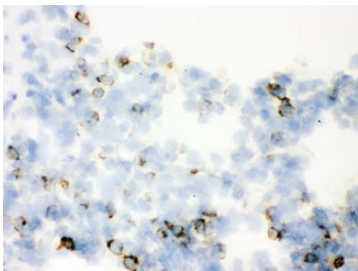
IHC testing of FFPE mouse lung with SFTPA1/2 antibody. HIER: Boil the paraffin sections in pH 6, 10mM citrate buffer for 20 minutes and allow to cool prior to staining.



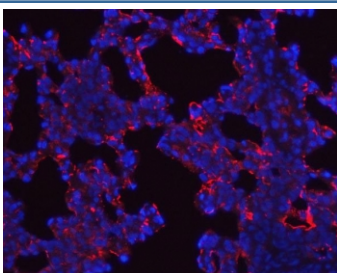
IHC testing of FFPE rat lung with SFTPA1/2 antibody. HIER: Boil the paraffin sections in pH 6, 10mM citrate buffer for 20 minutes and allow to cool prior to staining.



IHC testing of frozen mouse lung with SFTPA1/2 antibody.



IHC testing of frozen rat lung with SFTPA1/2 antibody.



Immunofluorescent staining of FFPE rat lung tissue with SFTPA1/2 antibody (red) and DAPI nuclear stain (blue). HIER: steam section in pH6 citrate buffer for 20 min.

Description

SFTPA1/2 is also known as SP-A. SFTPA1 encodes a lung surfactant protein that is a member of a subfamily of C-type lectins called collectins. The encoded protein binds specific carbohydrate moieties found on lipids and on the surface of microorganisms. This protein plays an essential role in surfactant homeostasis and in the defense against respiratory pathogens. Mutations in this gene are associated with idiopathic pulmonary fibrosis. Alternate splicing results in multiple transcript variants. SFTPA2 is one of several genes encoding pulmonary-surfactant associated proteins (SFTPA) located on chromosome 10. Mutations in this gene and a highly similar gene located nearby, which affect the highly conserved carbohydrate recognition domain, are associated with idiopathic pulmonary fibrosis. The current version of the assembly displays only a single centromeric SFTPA gene pair rather than the two gene pairs shown in the previous assembly which were thought to have resulted from a duplication.

Application Notes

Optimal dilution of the SFTPA1/2 antibody should be determined by the researcher.

Immunogen

Amino acids VNYTNWYRGEPAGRGKEQCVEMYTDGQWNRN of human SFTPA1/2 were used as the immunogen for the SFTPA1/2 antibody.

Storage

After reconstitution, the SFTPA1/2 antibody can be stored for up to one month at 4°C. For long-term, aliquot and store at -20°C. Avoid repeated freezing and thawing.