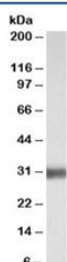


SFTPA1 Antibody (R34223)

| Catalog No. | Formulation | Size |
|--------------|---|--------|
| R34223-100UG | 0.5 mg/ml in 1X TBS, pH7.3, with 0.5% BSA (US sourced) and 0.02% sodium azide | 100 ug |

[Bulk quote request](#)

| | |
|----------------------|--|
| Availability | 1-3 business days |
| Species Reactivity | Human |
| Predicted Reactivity | Cow |
| Format | Antigen affinity purified |
| Clonality | Polyclonal (goat origin) |
| Isotype | Goat Ig |
| Purity | Antigen affinity |
| Gene ID | 653509; 729238 |
| Applications | Western Blot : 0.01-0.03ug/ml ELISA (peptide) LOD : 1:32000 |
| Limitations | This SFTPA1 antibody is available for research use only. |



Western blot testing of human lung lysate with SFTPA1 antibody at 0.01ug/ml. Predicted molecular weight: ~28kDa, routinely observed at 30~35kDa.

Description

Additional name(s) for this target protein: Surfactant protein A1; 35 kDa pulmonary surfactant-associated protein

Application Notes

Optimal dilution of the SFTPA1 antibody should be determined by the researcher.

Immunogen

Amino acids HLDEELQATLHDFR were used as the immunogen for this SFTPA1 antibody.

Storage

Aliquot and store the SFTPA1 antibody at -20oC.