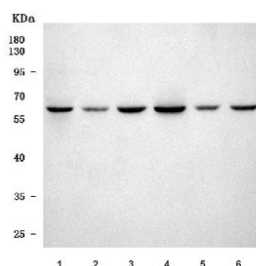


SETD3 Antibody / Actin-histidine N-methyltransferase (RQ7583)

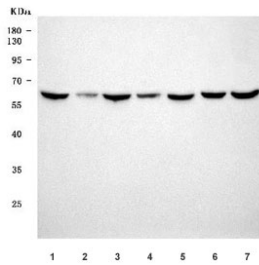
Catalog No.	Formulation	Size
RQ7583	0.5mg/ml if reconstituted with 0.2ml sterile DI water	100 ug

Bulk quote request

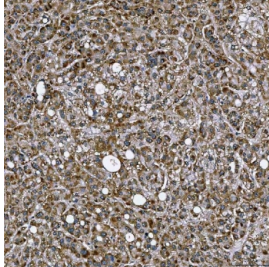
Availability	1-3 business days
Species Reactivity	Human, Mouse, Rat
Format	Antigen affinity purified
Clonality	Polyclonal (rabbit origin)
Isotype	Rabbit IgG
Purity	Antigen affinity purified
Buffer	Lyophilized from 1X PBS with 2% Trehalose
UniProt	Q86TU7
Localization	Cytoplasmic, nuclear
Applications	Western Blot : 0.5-1ug/ml Immunohistochemistry (FFPE) : 2-5ug/ml Immunofluorescence : 5ug/ml Flow Cytometry : 1-3ug/million cells Direct ELISA : 0.1-0.5ug/ml
Limitations	This SETD3 antibody is available for research use only.



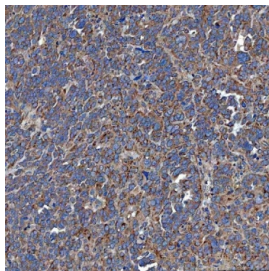
Western blot testing of 1) rat heart, 2) rat H9c2(2-1), 3) rat C6, 4) mouse heart, 5) mouse C2C12 and 6) mouse NIH 3T3 cell lysate with SETD3 antibody. Predicted molecular weight ~67 kDa.



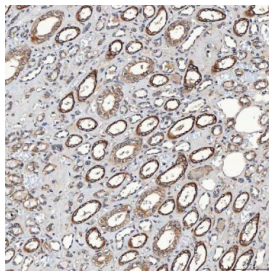
Western blot testing of human 1) MCF7, 2) T-47D, 3) Jurkat, 4) MOLT4, 5) HL60, 6) PC-3 and 7) RT4 cell lysate with SETD3 antibody. Predicted molecular weight ~67 kDa.



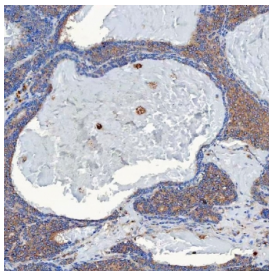
IHC staining of FFPE human liver cancer tissue with SETD3 antibody. HIER: boil tissue sections in pH8 EDTA for 20 min and allow to cool before testing.



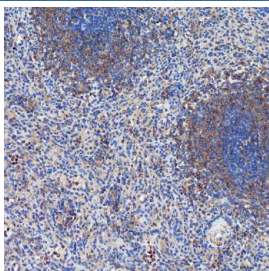
IHC staining of FFPE human ovarian serous cancer tissue with SETD3 antibody. HIER: boil tissue sections in pH8 EDTA for 20 min and allow to cool before testing.



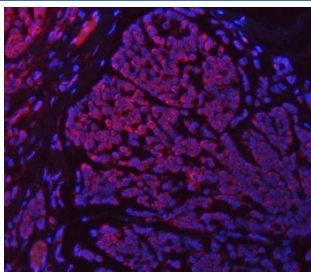
IHC staining of FFPE human renal cancer tissue with SETD3 antibody. HIER: boil tissue sections in pH8 EDTA for 20 min and allow to cool before testing.



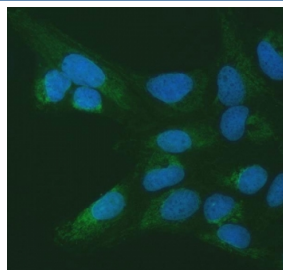
IHC staining of FFPE human breast cancer tissue with SETD3 antibody. HIER: boil tissue sections in pH8 EDTA for 20 min and allow to cool before testing.



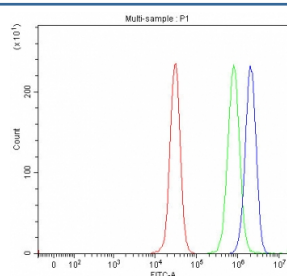
IHC staining of FFPE human spleen tissue with SETD3 antibody. HIER: boil tissue sections in pH8 EDTA for 20 min and allow to cool before testing.



Immunofluorescent staining of FFPE human breast cancer tissue with SETD3 antibody (red) and DAPI nuclear stain (blue). HIER: steam section in pH8 EDTA buffer for 20 min.



Immunofluorescent staining of FFPE human U-2 OS cells with SETD3 antibody (green) and DAPI nuclear stain (blue). HIER: steam section in pH6 citrate buffer for 20 min.



Flow cytometry testing of human 293T cells with SETD3 antibody at 1ug/million cells (blocked with goat sera); Red=cells alone, Green=isotype control, Blue= SETD3 antibody.

Description

SET domain containing 3 (SETD3) is a protein that in humans is encoded by the SETD3 gene. SETD3 is a histone methyltransferase. In mouse muscle cells, Setd3 catalyzes mono- and dimethylation of histone H3 lysine-4 and H3K36 and promotes transcription of genes required for muscle cell differentiation.

Application Notes

Optimal dilution of the SETD3 antibody should be determined by the researcher.

Immunogen

E. coli-derived recombinant human protein (amino acids Q173-R468) was used as the immunogen for the SETD3 antibody.

Storage

After reconstitution, the SETD3 antibody can be stored for up to one month at 4°C. For long-term, aliquot and store at -20°C. Avoid repeated freezing and thawing.

