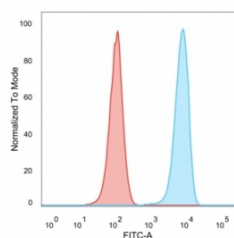


SET Antibody / Protein SET / TAFI [clone PCR-SET-1C6] (V9261)

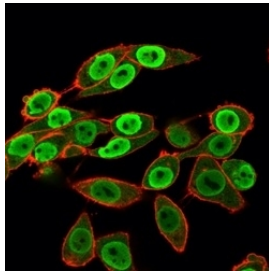
| Catalog No. | Formulation | Size |
|----------------|---|--------|
| V9261-100UG | 0.2 mg/ml in 1X PBS with 0.1 mg/ml BSA (US sourced), 0.05% sodium azide | 100 ug |
| V9261-20UG | 0.2 mg/ml in 1X PBS with 0.1 mg/ml BSA (US sourced), 0.05% sodium azide | 20 ug |
| V9261SAF-100UG | 1 mg/ml in 1X PBS; BSA free, sodium azide free | 100 ug |

[Bulk quote request](#)

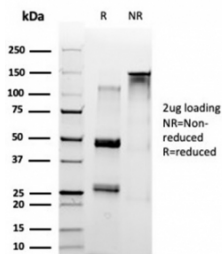
| | |
|---------------------------|--|
| Availability | 1-3 business days |
| Species Reactivity | Human |
| Format | Purified |
| Clonality | Monoclonal (mouse origin) |
| Isotype | Mouse IgG1 |
| Clone Name | PCR-SET-1C6 |
| Purity | Protein A/G affinity |
| UniProt | Q01105 |
| Localization | Cytoplasm, Nucleus |
| Applications | Flow Cytometry : 1-2ug/million cells Immunofluorescence : 1-2ug/ml Western Blot : 1-2ug/ml |
| Limitations | This SET antibody is available for research use only. |



FACS staining of PFA-fixed human HeLa cells with SET antibody (blue, clone PCR-SET-1C6) and isotype control (red).

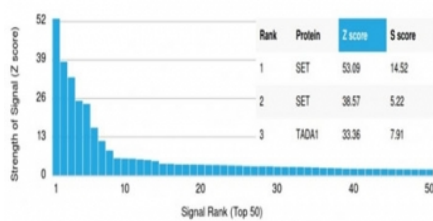


Immunofluorescent staining of human HeLa cells using SET antibody (green, clone PCRP-SET-1C6) and phalloidin (red).



SDS-PAGE analysis of purified, BSA-free SET antibody (clone PCRP-SET-1C6) as confirmation of integrity and purity.

Human Protein Microarray Specificity Validation



Analysis of HuProt(TM) microarray containing more than 19,000 full-length human proteins using SET antibody (clone PCRP-SET-1C6). These results demonstrate the foremost specificity of the PCRP-SET-1C6 mAb. Z- and S- score: The Z-score represents the strength of a signal that an antibody (in combination with a fluorescently-tagged anti-IgG secondary Ab) produces when binding to a particular protein on the HuProt(TM) array. Z-scores are described in units of standard deviations (SD's) above the mean value of all signals generated on that array. If the targets on the HuProt(TM) are arranged in descending order of the Z-score, the S-score is the difference (also in units of SD's) between the Z-scores. The S-score therefore represents the relative target specificity of an Ab to its intended target.

Description

Protein SET is a multitasking protein involved in apoptosis, transcription, nucleosome assembly and histone chaperoning. Isoform 1 and isoform 2 are potent inhibitors of protein phosphatase 2A. [UniProt]

Application Notes

Optimal dilution of the SET antibody should be determined by the researcher.

Immunogen

Recombinant full-length human SET protein was used as the immunogen for the SET antibody.

Storage

Aliquot the SET antibody and store frozen at -20oC or colder. Avoid repeated freeze-thaw cycles.

