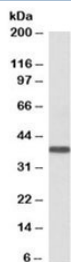


## SET Antibody (isoform 2) (R35837)

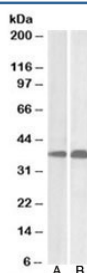
Catalog No.	Formulation	Size
R35837-100UG	0.5 mg/ml in 1X TBS, pH7.3, with 0.5% BSA (US sourced) and 0.02% sodium azide	100 ug

[Bulk quote request](#)

<b>Availability</b>	1-3 business days
<b>Species Reactivity</b>	Human
<b>Predicted Reactivity</b>	Cow
<b>Format</b>	Antigen affinity purified
<b>Clonality</b>	Polyclonal (goat origin)
<b>Isotype</b>	Goat Ig
<b>Purity</b>	Antigen affinity
<b>Gene ID</b>	6418
<b>Applications</b>	Western Blot : 0.3-1ug/ml ELISA (peptide) LOD : 1:128000
<b>Limitations</b>	This SET antibody is available for research use only.



Western blot testing of human kidney lysate with SET antibody at 0.3ug/ml. Predicted molecular weight: 32kDa.



Western blot testing of Daudi (A) and MOLT4 (B) cell lysate using SET antibody at 0.01ug/ml. Predicted molecular weight: 32kDa.

## Description

Additional name(s) for this target protein: SET nuclear oncogene, I2 alpha PP2A, 2PP2A, I2PP2A, IGAAD, IPP2A2

## Application Notes

Optimal dilution of the SET antibody should be determined by the researcher.

1. This SET antibody is specific to isoform 2.

## Immunogen

Amino acids SAPAAKVSKKELNS were used as the immunogen for this SET antibody. This sequence is specific to isoform 2.

## Storage

Aliquot and store the SET antibody at -20oC.