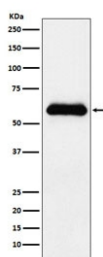


## SERPINA3 Antibody [clone ADED-19] (RQ4851)

Catalog No.	Formulation	Size
RQ4851	Antibody in PBS with 0.02% sodium azide, 50% glycerol and 0.4-0.5mg/ml BSA	100 ul

[Bulk quote request](#)

Availability	1-2 weeks
Species Reactivity	Human
Format	Purified
Clonality	Rabbit Monoclonal
Isotype	Rabbit IgG
Clone Name	ADED-19
Purity	Affinity purified
UniProt	P01011
Applications	Western Blot : 1:500-1:1000
Limitations	This SERPINA3 antibody is available for research use only.



Western blot testing of human plasma lysate with SERPINA3 antibody. Expected molecular weight: 47-65 kDa, depending on level of glycosylation.

### Description

The protein encoded by this gene is a plasma protease inhibitor and member of the serine protease inhibitor class. Polymorphisms in this protein appear to be tissue specific and influence protease targeting. Variations in this protein's sequence have been implicated in Alzheimer's disease, and deficiency of this protein has been associated with liver disease. Mutations have been identified in patients with Parkinson disease and chronic obstructive pulmonary disease. [RefSeq]

### Application Notes

Optimal dilution of the SERPINA3 antibody should be determined by the researcher.

## **Immunogen**

A synthetic peptide specific to human SERPINA3 / alpha 1 Antichymotrypsin was used as the immunogen for the SERPINA3 antibody.

## **Storage**

Store the SERPINA3 antibody at -20oC.