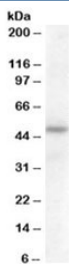


## SERPINA12 Antibody (R35541)

Catalog No.	Formulation	Size
R35541-100UG	0.5 mg/ml in 1X TBS, pH7.3, with 0.5% BSA (US sourced) and 0.02% sodium azide	100 ug

[Bulk quote request](#)

<b>Availability</b>	1-3 business days
<b>Species Reactivity</b>	Human
<b>Format</b>	Antigen affinity purified
<b>Clonality</b>	Polyclonal (goat origin)
<b>Isotype</b>	Goat Ig
<b>Purity</b>	Antigen affinity
<b>Gene ID</b>	145264
<b>Applications</b>	Western Blot : 0.3-1ug/ml ELISA (peptide) LOD : 1:32000
<b>Limitations</b>	This SERPINA12 antibody is available for research use only.



Western blot testing of human adipose lysate with SERPINA12 antibody at 0.5ug/ml.  
Predicted molecular weight: ~47kDa.

### Description

Additional name(s) for this target protein: Serpin peptidase inhibitor, clade A (alpha-1 antiproteinase, antitrypsin), member 12

### Application Notes

Optimal dilution of the SERPINA12 antibody should be determined by the researcher.

### Immunogen

Amino acids RARWKHEFDPNVTK were used as the immunogen for this SERPINA12 antibody.

## Storage

Aliquot and store the SERPINA12 antibody at -20oC.