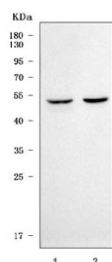


## Serpin E3 Antibody / SERPINE3 (RQ7610)

Catalog No.	Formulation	Size
RQ7610	0.5mg/ml if reconstituted with 0.2ml sterile DI water	100 ug

**Bulk quote request**

<b>Availability</b>	1-3 business days
<b>Species Reactivity</b>	Human, Mouse, Rat
<b>Format</b>	Antigen affinity purified
<b>Clonality</b>	Polyclonal (rabbit origin)
<b>Isotype</b>	Rabbit IgG
<b>Purity</b>	Antigen affinity purified
<b>Buffer</b>	Lyophilized from 1X PBS with 2% Trehalose
<b>UniProt</b>	A8MV23
<b>Applications</b>	Western Blot : 0.5-1ug/ml Direct ELISA : 0.1-0.5ug/ml
<b>Limitations</b>	This Serpin E3 antibody is available for research use only.



Western blot testing of 1) rat brain and 2) mouse brain tissue lysate with Serpin E3 antibody. Predicted molecular weight ~47 kDa.

### Description

Predicted to enable serine-type endopeptidase inhibitor activity. Predicted to be involved in negative regulation of endopeptidase activity. Predicted to be active in extracellular space.

### Application Notes

Optimal dilution of the Serpin E3 antibody should be determined by the researcher.

### Immunogen

E. coli-derived recombinant human protein (amino acids K90-F424) was used as the immunogen for the Serpin E3

antibody.

## **Storage**

After reconstitution, the Serpin E3 antibody can be stored for up to one month at 4°C. For long-term, aliquot and store at -20°C. Avoid repeated freezing and thawing.