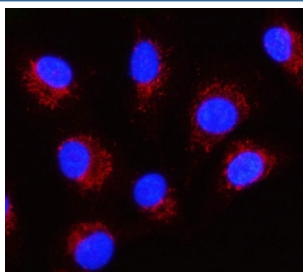


Serpin B8 Antibody / SERPINB8 (RQ8747)

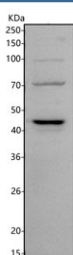
Catalog No.	Formulation	Size
RQ8747	0.5mg/ml if reconstituted with 0.2ml sterile DI water	100 ug

Bulk quote request

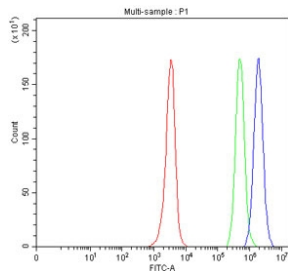
Availability	1-3 days
Species Reactivity	Human
Format	Antigen affinity purified
Clonality	Polyclonal (rabbit origin)
Isotype	Rabbit IgG
Purity	Antigen affinity chromatography
Buffer	Lyophilized from 1X PBS with 2% Trehalose
UniProt	P50452
Applications	Western Blot : 1-2ug/ml Immunofluorescence : 5ug/ml Flow Cytometry : 1-3ug/million cells ELISA : 0.1-0.5ug/ml
Limitations	This Serpin B8 antibody is available for research use only.



Immunofluorescent staining of FFPE human A549 cells with Serpin B8 antibody (red) and DAPI nuclear stain (blue). HIER: steam section in pH6 citrate buffer for 20 min.



Western blot testing of human Jurkat cell lysate with Serpin B8 antibody. Predicted molecular weight ~43 kDa.



Flow cytometry testing of fixed and permeabilized human JK cells with Serpin B8 antibody at 1ug/million cells (blocked with goat sera); Red=cells alone, Green=isotype control, Blue= Serpin B8 antibody.

Description

Serpin B8 is a protein that in humans is encoded by the SERPINB8 gene. The protein encoded by this gene is a member of the ov-serpin family of serine protease inhibitors. The encoded protein is produced by platelets and can bind to and inhibit the function of furin, a serine protease involved in platelet functions. In addition, this protein has been found to enhance the mechanical stability of cell-cell adhesion in the skin, and defects in this gene have been associated with an autosomal-recessive form of exfoliative ichthyosis.

Application Notes

Optimal dilution of the Serpin B8 antibody should be determined by the researcher.

Immunogen

An E.coli-derived human recombinant protein (amino acids E173-K316) was used as the immunogen for the Serpin B88 antibody.

Storage

After reconstitution, the Serpin B8 antibody can be stored for up to one month at 4oC. For long-term, aliquot and store at -20oC. Avoid repeated freezing and thawing.