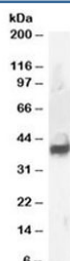


## Septin 3 Antibody (R35882)

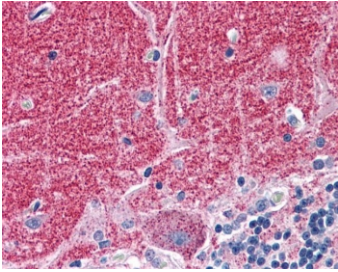
Catalog No.	Formulation	Size
R35882-100UG	0.5 mg/ml in 1X TBS, pH7.3, with 0.5% BSA (US sourced) and 0.02% sodium azide	100 ug

[Bulk quote request](#)

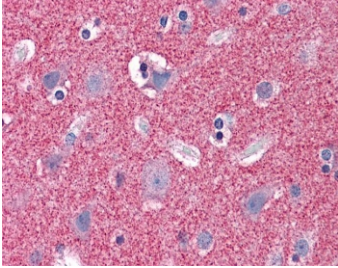
Availability	1-3 business days
Species Reactivity	Human
Predicted Reactivity	Cow, Dog, Mouse, Pig, Rat
Format	Antigen affinity purified
Clonality	Polyclonal (goat origin)
Isotype	Goat Ig
Purity	Antigen affinity
Gene ID	55964
Localization	Cytoplasmic
Applications	Western Blot : 0.5-2ug/ml IHC (FFPE) : 3.75ug/ml ELISA (peptide) LOD : 1:32000
Limitations	This Septin 3 antibody is available for research use only.



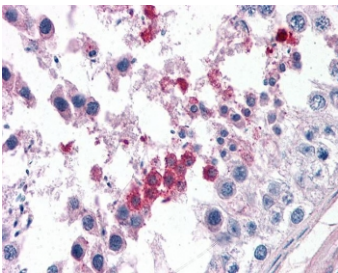
Western blot testing of human brain lysate with Septin 3 antibody at 1ug/ml.  
Predicted/observed molecular weight: 40 kDa.



IHC testing of FFPE human cerebellum tissue with Septin 3 antibody at 3.75ug/ml.  
Required HIER: steamed antigen retrieval with pH6 citrate buffer; AP-staining.



IHC testing of FFPE human cortex (brain) tissue with Septin 3 antibody at 3.75ug/ml.  
Required HIER: steamed antigen retrieval with pH6 citrate buffer; AP-staining.



IHC testing of FFPE human testis tissue with Septin 3 antibody at 3.75ug/ml. Required HIER: steamed antigen retrieval with pH6 citrate buffer; AP-staining.

## Description

Additional name(s) for this target protein: Neuronal-specific septin 3, G-Septin, SEP3; SEPT3

## Application Notes

Optimal dilution of the Septin 3 antibody should be determined by the researcher.

## Immunogen

Amino acids SELVPEPRPKPA were used as the immunogen for this Septin 3 antibody.

## Storage

Aliquot and store the Septin 3 antibody at -20oC.