

## SEPT2 Antibody (R35943)

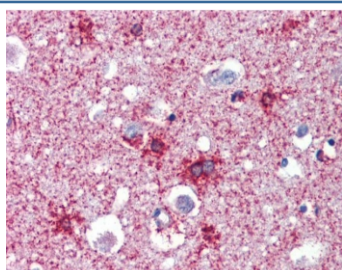
Catalog No.	Formulation	Size
R35943-100UG	0.5 mg/ml in 1X TBS, pH7.3, with 0.5% BSA (US sourced) and 0.02% sodium azide	100 ug

[Bulk quote request](#)

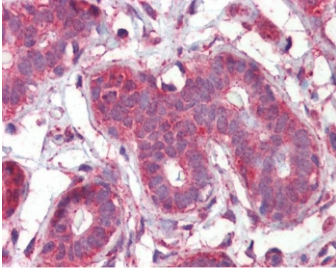
<b>Availability</b>	1-3 business days
<b>Species Reactivity</b>	Human, Mouse, Rat
<b>Format</b>	Antigen affinity purified
<b>Clonality</b>	Polyclonal (goat origin)
<b>Isotype</b>	Goat Ig
<b>Purity</b>	Antigen affinity
<b>Gene ID</b>	4735
<b>Localization</b>	Cytoplasmic, cell membrane
<b>Applications</b>	Western Blot : 1-2ug/ml Immunohistochemistry (FFPE) : 2.5ug/ml Flow Cytometry : 1ug/million cells in 0.1ml ELISA (peptide) LOD : 1:32000
<b>Limitations</b>	This SEPT2 antibody is available for research use only.



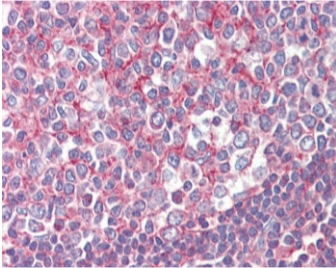
Western blot testing of human testis lysate with SEPT2 antibody. Predicted molecular weight: ~41 kDa.



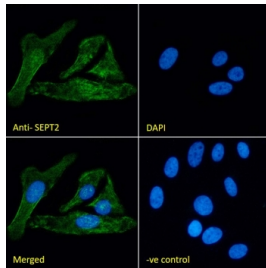
IHC testing of FFPE human brain (cortex) tissue with SEPT2 antibody at 2.5ug/ml. Required HIER: steamed antigen retrieval with pH6 citrate buffer; AP-staining.



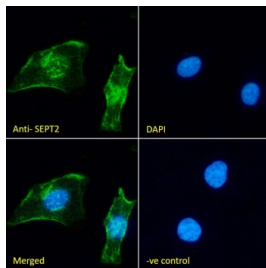
IHC testing of FFPE human breast tissue with SEPT2 antibody at 2.5ug/ml. Required HIER: steamed antigen retrieval with pH6 citrate buffer; AP-staining.



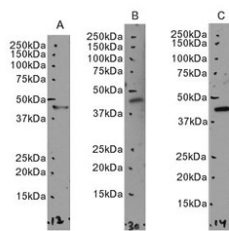
IHC testing of FFPE human tonsil tissue with SEPT2 antibody at 2.5ug/ml. Required HIER: steamed antigen retrieval with pH6 citrate buffer; AP-staining.



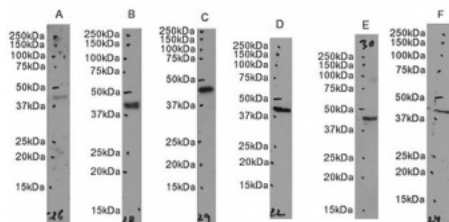
Immunofluorescent staining of fixed and permeabilized human U-2 OS cells with SEPT2 antibody (green) at 10ug/ml and DAPI nuclear stain (blue).



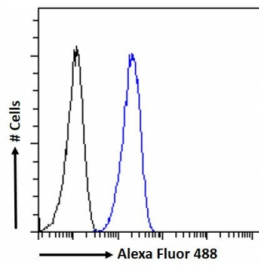
Immunofluorescent staining of fixed and permeabilized human HeLa cells with SEPT2 antibody (green) at 10ug/ml and DAPI nuclear stain (blue).



Western blot testing of A) human testis, B) mouse testis and C) rat testis tissue lysate with SEPT2 antibody. Predicted molecular weight: ~41 kDa.



Western blot testing of A) human HepG2, B) human Jurkat, C) human K562, 4) human HEL, 5) mouse NIH 3T3 and 6) rat KNRK cell lysate with SEPT2 antibody. Predicted molecular weight: ~41 kDa.



FACS testing of fixed and permeabilized human HeLa cells with SEPT2 antibody (blue) at 10ug/ml and naive goat Ig (black).

## Description

Additional name(s) for this target protein: Septin 2

## Application Notes

Optimal dilution of the SEPT2 antibody should be determined by the researcher.

## Immunogen

Amino acids SKQQPTQFINPET were used as the immunogen for this SEPT2 antibody.

## Storage

Aliquot and store the SEPT2 antibody at -20oC.