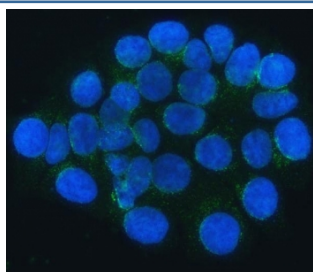


SEC24C Antibody / SEC24-related protein C (RQ7466)

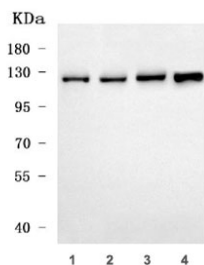
Catalog No.	Formulation	Size
RQ7466	0.5mg/ml if reconstituted with 0.2ml sterile DI water	100 ug

Bulk quote request

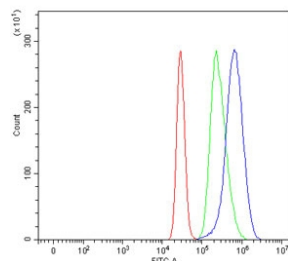
Availability	1-3 business days
Species Reactivity	Human
Format	Antigen affinity purified
Clonality	Polyclonal (rabbit origin)
Isotype	Rabbit IgG
Purity	Antigen affinity purified
Buffer	Lyophilized from 1X PBS with 2% Trehalose
UniProt	P53992
Localization	Cytoplasmic
Applications	Western Blot : 0.5-1ug/ml Immunofluorescence : 5ug/ml Flow Cytometry : 1-3ug/million cells Direct ELISA : 0.1-0.5ug/ml
Limitations	This SEC24C antibody is available for research use only.



Immunofluorescent staining of FFPE human MCF7 cells with SEC24C antibody (green) and DAPI nuclear stain (blue). HIER: steam section in pH6 citrate buffer for 20 min.



Western blot testing of human 1) HeLa, 2) 293T, 3) Jurkat and 4) T-47D cell lysate with SEC24C antibody. Predicted molecular weight ~118 kDa.



Flow cytometry testing of human K562 cells with SEC24C antibody at 1ug/million cells (blocked with goat sera); Red=cells alone, Green=isotype control, Blue= SEC24C antibody.

Description

Protein transport protein Sec24C is a protein that in humans is encoded by the SEC24C gene. The protein encoded by this gene is a member of the SEC24 subfamily of the SEC23/SEC24 family, which is involved in vesicle trafficking. The encoded protein has similarity to yeast Sec24p component of COPII. COPII is the coat protein complex responsible for vesicle budding from the ER. The product of this gene may play a role in shaping the vesicle, as well as in cargo selection and concentration. Alternatively spliced transcript variants encoding the same protein have been identified.

Application Notes

Optimal dilution of the SEC24C antibody should be determined by the researcher.

Immunogen

E. coli-derived recombinant human protein (amino acids L178-R1033) was used as the immunogen for the SEC24C antibody.

Storage

After reconstitution, the SEC24C antibody can be stored for up to one month at 4oC. For long-term, aliquot and store at -20oC. Avoid repeated freezing and thawing.