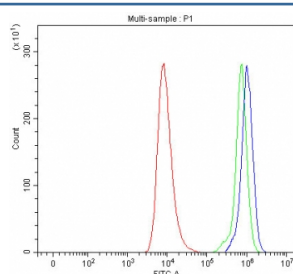


SEC24A Antibody (RQ7588)

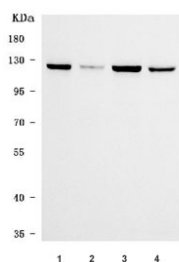
Catalog No.	Formulation	Size
RQ7588	0.5mg/ml if reconstituted with 0.2ml sterile DI water	100 ug

Bulk quote request

Availability	1-3 business days
Species Reactivity	Human, Monkey
Format	Antigen affinity purified
Clonality	Polyclonal (rabbit origin)
Isotype	Rabbit IgG
Purity	Antigen affinity purified
Buffer	Lyophilized from 1X PBS with 2% Trehalose
UniProt	O95486
Applications	Western Blot : 0.5-1ug/ml Flow Cytometry : 1-3ug/million cells Direct ELISA : 0.1-0.5ug/ml
Limitations	This SEC24A antibody is available for research use only.



Flow cytometry testing of human HEL cells with SEC24A antibody at 1ug/million cells (blocked with goat sera); Red=cells alone, Green=isotype control, Blue= SEC24A antibody.



Western blot testing of 1) human HeLa, 2) human 293T, 3) human HepG2 and 4) monkey COS-7 cell lysate with SEC24A antibody. Predicted molecular weight ~120 kDa and ~66 kDa (two isoforms).

Description

SEC24 family, member A (*S. cerevisiae*) is a protein that in humans is encoded by the SEC24A gene. The protein encoded by this gene belongs to a family of proteins that are homologous to yeast Sec24. This protein is a component of coat protein II (COPII)-coated vesicles that mediate protein transport from the endoplasmic reticulum. COPII acts in the cytoplasm to promote the transport of secretory, plasma membrane, and vacuolar proteins from the endoplasmic reticulum to the golgi complex. Alternatively spliced transcript variants encoding different isoforms have been found for this gene.

Application Notes

Optimal dilution of the SEC24A antibody should be determined by the researcher.

Immunogen

E. coli-derived recombinant human protein (amino acids Q43-Q1045) was used as the immunogen for the SEC24A antibody.

Storage

After reconstitution, the SEC24A antibody can be stored for up to one month at 4°C. For long-term, aliquot and store at -20°C. Avoid repeated freezing and thawing.