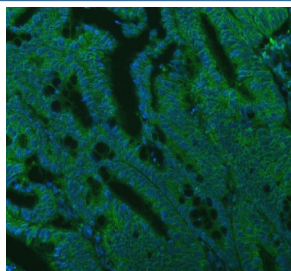


SEC22B Antibody (RQ7527)

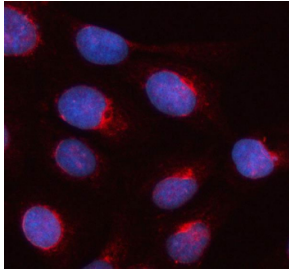
Catalog No.	Formulation	Size
RQ7527	0.5mg/ml if reconstituted with 0.2ml sterile DI water	100 ug

Bulk quote request

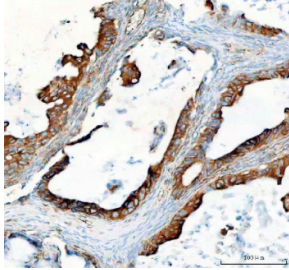
Availability	1-3 business days
Species Reactivity	Human, Mouse, Rat
Format	Antigen affinity purified
Clonality	Polyclonal (rabbit origin)
Isotype	Rabbit IgG
Purity	Antigen affinity purified
Buffer	Lyophilized from 1X PBS with 2% Trehalose
UniProt	O75396
Localization	Cytoplasm
Applications	Western Blot : 0.5-1ug/ml Flow Cytometry : 1-3ug/million cells Immunofluorescence : 5ug/ml Immunohistochemistry (FFPE) : 2-5ug/ml Direct ELISA : 0.1-0.5ug/ml
Limitations	This SEC22B antibody is available for research use only.



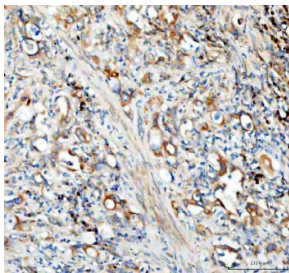
Immunofluorescent staining of FFPE human colon cancer tissue with SEC22B antibody (green) and DAPI nuclear stain (blue). HIER: steam section in pH8 EDTA buffer for 20 min.



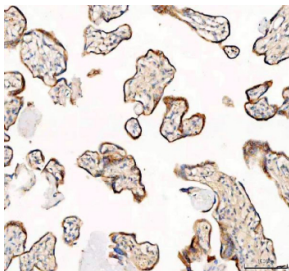
Immunofluorescent staining of FFPE human U-2 OS cells with SEC22B antibody (red) and DAPI nuclear stain (blue). HIER: steam section in pH6 citrate buffer for 20 min.



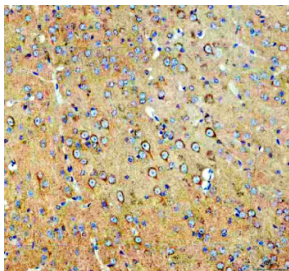
IHC staining of FFPE human ovarian serous adenocarcinoma tissue with SEC22B antibody. HIER: boil tissue sections in pH8 EDTA for 20 min and allow to cool before testing.



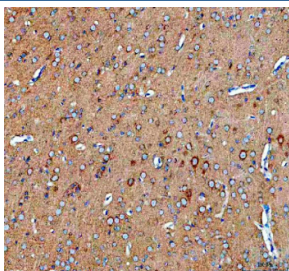
IHC staining of FFPE human colorectal adenocarcinoma tissue with SEC22B antibody. HIER: boil tissue sections in pH8 EDTA for 20 min and allow to cool before testing.



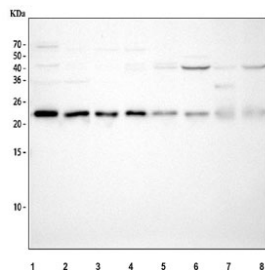
IHC staining of FFPE human placental tissue with SEC22B antibody. HIER: boil tissue sections in pH8 EDTA for 20 min and allow to cool before testing.



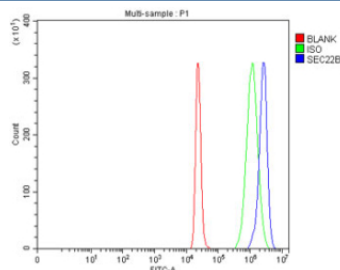
IHC staining of FFPE mouse brain tissue with SEC22B antibody. HIER: boil tissue sections in pH8 EDTA for 20 min and allow to cool before testing.



IHC staining of FFPE rat brain tissue with SEC22B antibody. HIER: boil tissue sections in pH8 EDTA for 20 min and allow to cool before testing.



Western blot testing of 1) human U-87 MG, 2) human HeLa, 3) human MCF7, 4) human SH-SY5Y, 5) rat brain, 6) rat liver, 7) mouse brain and 8) mouse liver tissue lysate with SEC22B antibody. Predicted molecular weight ~25 kDa.



Flow cytometry testing of human 293T cells with SEC22B antibody at 1ug/million cells (blocked with goat sera); Red=cells alone, Green=isotype control, Blue= SEC22B antibody.

Description

Vesicle-trafficking protein SEC22b is a protein that in humans is encoded by the SEC22B gene. The protein encoded by this gene is a member of the SEC22 family of vesicle trafficking proteins. It seems to complex with SNARE and it is thought to play a role in the ER-Golgi protein trafficking. This protein has strong similarity to *Mus musculus* and *Cricetulus griseus* proteins.

Application Notes

Optimal dilution of the SEC22B antibody should be determined by the researcher.

Immunogen

E. coli-derived recombinant human protein (amino acids M6-A197) was used as the immunogen for the SEC22B antibody.

Storage

After reconstitution, the SEC22B antibody can be stored for up to one month at 4°C. For long-term, aliquot and store at -20°C. Avoid repeated freezing and thawing.