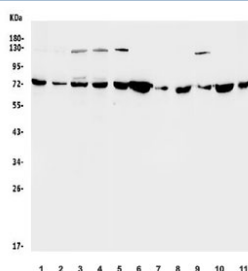


SDHA Antibody (RQ5669)

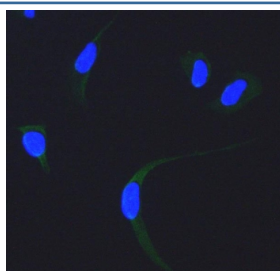
| Catalog No. | Formulation | Size |
|-------------|---|--------|
| RQ5669 | 0.5mg/ml if reconstituted with 0.2ml sterile DI water | 100 ug |

Bulk quote request

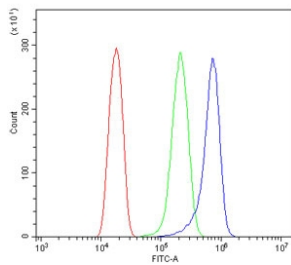
| | |
|---------------------------|--|
| Availability | 1-3 business days |
| Species Reactivity | Human, Mouse, Rat |
| Format | Antigen affinity purified |
| Clonality | Polyclonal |
| Isotype | Rabbit IgG |
| Purity | Affinity purified |
| Buffer | Lyophilized from 1X PBS with 2% Trehalose and 0.025% sodium azide |
| UniProt | P31040 |
| Applications | Western Blot : 0.5-1ug/ml Immunofluorescence : 2-4ug/ml Flow Cytometry : 1-3ug/million cells |
| Limitations | This SDHA antibody is available for research use only. |



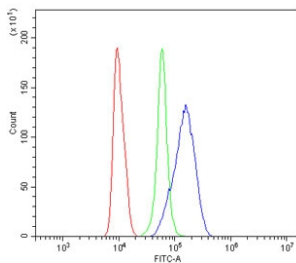
Western blot testing of human 1) HeLa, 2) HepG2, 3) HEK293, 4) Caco-2 and rat 5) brain, 6) kidney, 7) spleen, 8) liver and mouse 9) brain, 10) kidney, 11) liver lysate with SDHA antibody. Predicted molecular weight ~72 kDa.



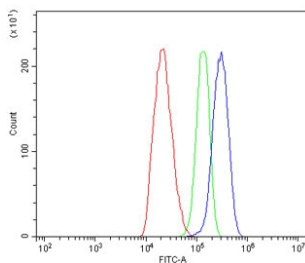
Immunofluorescent staining of FFPE human HeLa cells with SDHA antibody (green) and DAPI nuclear stain (blue). HIER: steam section in pH6 citrate buffer for 20 min.



Flow cytometry testing of human HeLa cells with SDHA antibody at 1ug/million cells (blocked with goat sera); Red=cells alone, Green=isotype control, Blue= SDHA antibody.



Flow cytometry testing of mouse RAW264.7 cells with SDHA antibody at 1ug/million cells (blocked with goat sera); Red=cells alone, Green=isotype control, Blue= SDHA antibody.



Flow cytometry testing of rat C6 cells with SDHA antibody at 1ug/million cells (blocked with goat sera); Red=cells alone, Green=isotype control, Blue= SDHA antibody.

Description

Succinate dehydrogenase complex, subunit A, flavoprotein variant is a protein that in humans is encoded by the SDHA gene. It is mapped to 5p15.33. This gene encodes a major catalytic subunit of succinate-ubiquinone oxidoreductase, a complex of the mitochondrial respiratory chain. The complex is composed of four nuclear-encoded subunits and is localized in the mitochondrial inner membrane. Mutations in this gene have been associated with a form of mitochondrial respiratory chain deficiency known as Leigh Syndrome. A pseudogene has been identified on chromosome 3q29. Alternatively spliced transcript variants encoding different isoforms have been found for this gene.

Application Notes

Optimal dilution of the SDHA antibody should be determined by the researcher.

Immunogen

Amino acids YRPVIDKTLNEADCAT from the human protein were used as the immunogen for the SDHA antibody.

Storage

After reconstitution, the SDHA antibody can be stored for up to one month at 4oC. For long-term, aliquot and store at -20oC. Avoid repeated freezing and thawing.

