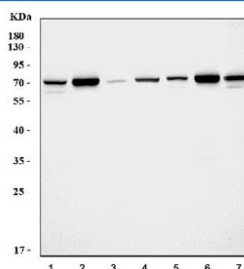


SDHA Antibody (R30807)

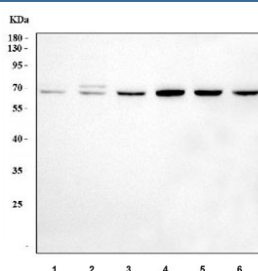
Catalog No.	Formulation	Size
R30807	0.5mg/ml if reconstituted with 0.2ml sterile DI water	100 ug

Bulk quote request

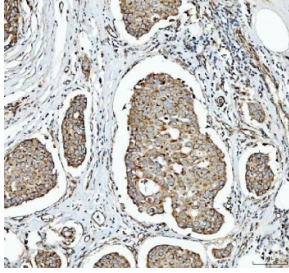
Availability	1-3 business days
Species Reactivity	Human, Mouse, Rat
Format	Antigen affinity purified
Clonality	Polyclonal (rabbit origin)
Isotype	Rabbit IgG
Purity	Antigen affinity
Buffer	Lyophilized from 1X PBS with 2% Trehalose
UniProt	P31040
Localization	Cytoplasm (Mitochondria)
Applications	Western Blot : 0.5-1ug/ml Immunohistochemistry (FFPE) : 2-5ug/ml Flow Cytometry : 1-3ug/million cells
Limitations	This SDHA antibody is available for research use only.



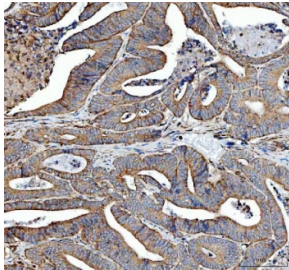
Western blot testing of 1) rat brain, 2) rat kidney, 3) rat spleen, 4) rat liver, 5) mouse brain, 6) mouse kidney and 7) mouse liver tissue lysate with SDHA antibody. Predicted molecular weight: 57-73 kDa (multiple isoforms).



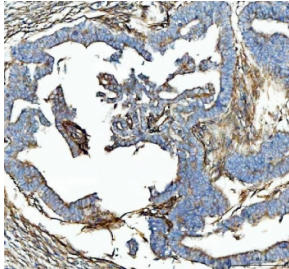
Western blot testing of 1) human 293T, 2) human MCF7, 3) human HepG2, 4) rat brain, 5) mouse brain and 6) mouse spleen tissue lysate with SDHA antibody. Predicted molecular weight: 57-73 kDa (multiple isoforms).



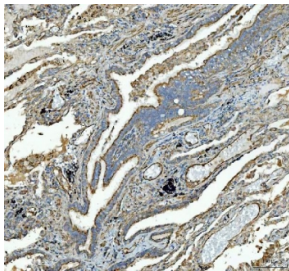
IHC staining of FFPE human breast cancer tissue with SDHA antibody. HIER: boil tissue sections in pH8 EDTA for 20 min and allow to cool before testing.



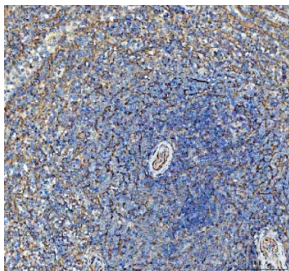
IHC staining of FFPE human rectum adenocarcinoma tissue with SDHA antibody. HIER: boil tissue sections in pH8 EDTA for 20 min and allow to cool before testing.



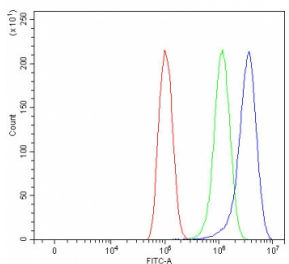
IHC staining of FFPE human colon adenocarcinoma tissue with SDHA antibody. HIER: boil tissue sections in pH8 EDTA for 20 min and allow to cool before testing.



IHC staining of FFPE human lung cancer tissue with SDHA antibody. HIER: boil tissue sections in pH8 EDTA for 20 min and allow to cool before testing.



IHC staining of FFPE human spleen tissue with SDHA antibody. HIER: boil tissue sections in pH8 EDTA for 20 min and allow to cool before testing.



Flow cytometry testing of fixed and permeabilized human PC-3 cells with SDHA antibody at 1ug/million cells (blocked with goat sera); Red=cells alone, Green=isotype control, Blue= SDHA antibody.

Description

Succinate dehydrogenase complex, subunit a, flavoprotein is a protein that in humans is encoded by the SDHA gene. The gene that codes for the protein is nuclear, even though the protein is located in the inner membrane of the mitochondria. Heterozygous carriers of an SDHA mutation do not develop paragangliomas as has been seen for mutations in the other subunits. In vitro functional expression studies in the yeast homolog showed that the mutation resulted in a loss of SDH activity and rendered the mutant protein more susceptible to proteolysis. The findings indicated that SDHA, like other SDH subunits, can act as a tumor suppressor gene.

Application Notes

The stated application concentrations are suggested starting amounts. Titration of the SDHA antibody may be required due to differences in protocols and secondary/substrate sensitivity.

Immunogen

An amino acid sequence from the N-terminus of human SDHA (NMEEDNWRWHFYDTVK) was used as the immunogen for this SDHA antibody (100% homologous in human, mouse and rat).

Storage

After reconstitution, the SDHA antibody can be stored for up to one month at 4°C. For long-term, aliquot and store at -20°C. Avoid repeated freezing and thawing.