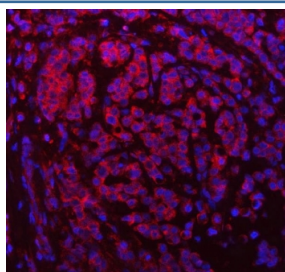


SDF2L1 Antibody / SDF2-like protein 1 (RQ7490)

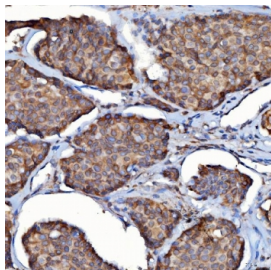
Catalog No.	Formulation	Size
RQ7490	0.5mg/ml if reconstituted with 0.2ml sterile DI water	100 ug

Bulk quote request

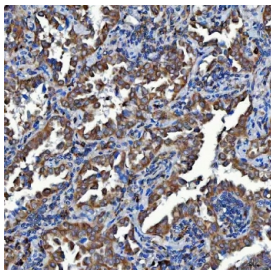
Availability	1-3 business days
Species Reactivity	Human, Mouse, Rat
Format	Antigen affinity purified
Clonality	Polyclonal (rabbit origin)
Isotype	Rabbit IgG
Purity	Antigen affinity purified
Buffer	Lyophilized from 1X PBS with 2% Trehalose
UniProt	Q9HCN8
Localization	Cytoplasmic (ER)
Applications	Western Blot : 0.5-1ug/ml Immunohistochemistry (FFPE) : 2-5ug/ml Immunofluorescence : 5ug/ml Direct ELISA : 0.1-0.5ug/ml
Limitations	This SDF2L1 antibody is available for research use only.



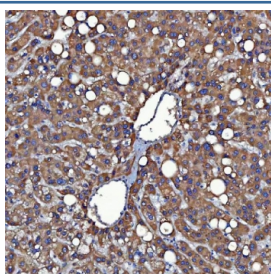
Immunofluorescent staining of FFPE human breast cancer tissue with SDF2L1 antibody (red) and DAPI nuclear stain (blue). HIER: steam section in pH8 EDTA buffer for 20 min.



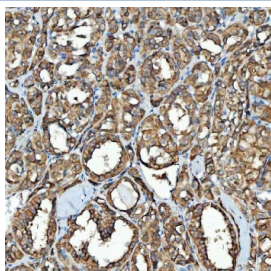
IHC staining of FFPE human breast cancer tissue with SDF2L1 antibody. HIER: boil tissue sections in pH8 EDTA for 20 min and allow to cool before testing.



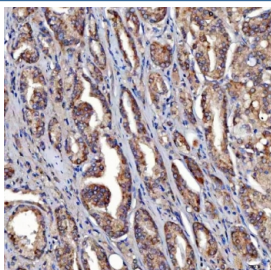
IHC staining of FFPE human lung cancer tissue with SDF2L1 antibody. HIER: boil tissue sections in pH8 EDTA for 20 min and allow to cool before testing.



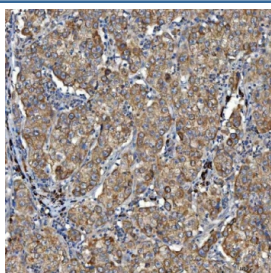
IHC staining of FFPE human liver cancer tissue with SDF2L1 antibody. HIER: boil tissue sections in pH8 EDTA for 20 min and allow to cool before testing.



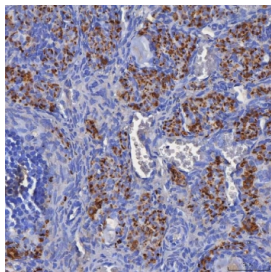
IHC staining of FFPE human thyroid cancer tissue with SDF2L1 antibody. HIER: boil tissue sections in pH8 EDTA for 20 min and allow to cool before testing.



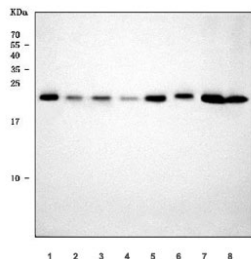
IHC staining of FFPE human prostate cancer tissue with SDF2L1 antibody. HIER: boil tissue sections in pH8 EDTA for 20 min and allow to cool before testing.



IHC staining of FFPE human cervical cancer tissue with SDF2L1 antibody. HIER: boil tissue sections in pH8 EDTA for 20 min and allow to cool before testing.



IHC staining of FFPE mouse ovary tissue with SDF2L1 antibody. HIER: boil tissue sections in pH8 EDTA for 20 min and allow to cool before testing.



Western blot testing of 1) human K562, 2) human 293T, 3) human HepG2, 4) human MCF7, 5) rat pancreas, 6) rat testis, 7) mouse pancreas and 8) mouse testis tissue lysate with SDF2L1 antibody. Predicted molecular weight ~24 kDa.

Description

Enables misfolded protein binding activity. Involved in chaperone cofactor-dependent protein refolding. Located in endoplasmic reticulum. Part of chaperone complex.

Application Notes

Optimal dilution of the SDF2L1 antibody should be determined by the researcher.

Immunogen

E. coli-derived recombinant human protein (amino acids A29-L221) was used as the immunogen for the SDF2L1 antibody.

Storage

After reconstitution, the SDF2L1 antibody can be stored for up to one month at 4°C. For long-term, aliquot and store at -20°C. Avoid repeated freezing and thawing.