

## SDF2-like protein 1 Antibody / SDF2L1 (F54671)

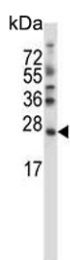
Catalog No.	Formulation	Size
F54671-0.4ML	In 1X PBS, pH 7.4, with 0.09% sodium azide	0.4 ml
F54671-0.08ML	In 1X PBS, pH 7.4, with 0.09% sodium azide	0.08 ml

**Bulk quote request**

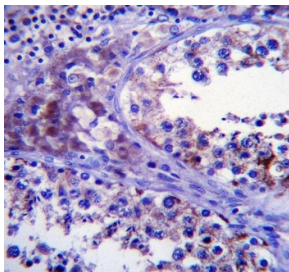
<b>Availability</b>	1-3 business days
<b>Species Reactivity</b>	Human, Mouse
<b>Format</b>	Purified
<b>Clonality</b>	Polyclonal (rabbit origin)
<b>Isotype</b>	Rabbit Ig
<b>Purity</b>	Antigen affinity purified
<b>UniProt</b>	Q9HCN8
<b>Applications</b>	Flow Cytometry : 1:25 (1x10e6 cells) Western Blot : 1:500-1:2000 Immunohistochemistry (FFPE) : 1:25
<b>Limitations</b>	This SDF2-like protein 1 antibody is available for research use only.



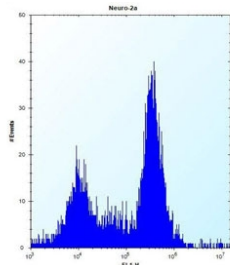
Western blot testing of mouse Neuro-2a cell lysate with SDF2-like protein 1 antibody.  
Predicted molecular weight ~24 kDa.



Western blot testing of human SK-BR-3 cell lysate with SDF2-like protein 1 antibody.  
Predicted molecular weight ~24 kDa.



IHC testing of FFPE human testis tissue with SDF2-like protein 1 antibody. HIER: steam section in pH6 citrate buffer for 20 min and allow to cool prior to staining.



Flow cytometry testing of mouse Neuro-2a cells with SDF2-like protein 1 antibody; Left=isotype control, Right= SDF2-like protein 1 antibody.

## Application Notes

The stated application concentrations are suggested starting points. Titration of the SDF2-like protein 1 antibody may be required due to differences in protocols and secondary/substrate sensitivity.

## Immunogen

A portion of amino acids 160-189 from the human protein was used as the immunogen for the SDF2-like protein 1 antibody.

## Storage

Aliquot the SDF2-like protein 1 antibody and store frozen at -20oC or colder. Avoid repeated freeze-thaw cycles.