

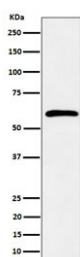
## SDC3 Antibody / Syndecan 3 / SYND3 [clone 29S33] (RQ8667)

Catalog No.	Formulation	Size
RQ8667	Antibody in PBS with 0.02% sodium azide, 50% glycerol and 0.4-0.5mg/ml BSA	100 ul

Recombinant RABBIT MONOCLONAL

[Bulk quote request](#)

Availability	1-3 days
Species Reactivity	Human
Format	Purified
Clonality	Recombinant Rabbit Monoclonal
Isotype	Rabbit IgG
Clone Name	29S33
Purity	Affinity chromatography
UniProt	O75056
Applications	Western Blot : 1:500-1:2000
Limitations	This Syndecan 3 antibody is available for research use only.



Western blot testing of human K562 cell lysate with SDC3 antibody. Predicted molecular weight ~46 kDa but may be observed at higher molecular weights due to glycosylation.

### Description

SDC3 may play a role in the organization of cell shape by affecting the actin cytoskeleton, and possibly by transferring signals from the cell surface in a sugar-dependent mechanism.

### Application Notes

Optimal dilution of the Syndecan 3 antibody should be determined by the researcher.

### Immunogen

A synthetic peptide specific to human Syndecan 3 protein was used as the immunogen for the Syndecan 3 Antibody.

## Storage

Store the Syndecan 3 antibody at -20oC.