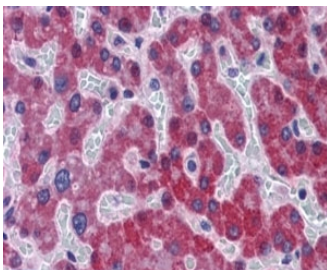


SCD1 Antibody (R35638)

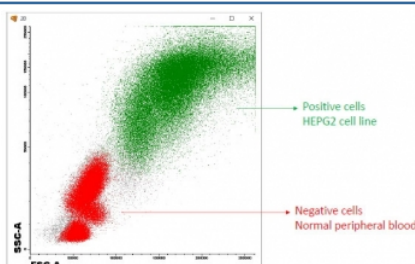
Catalog No.	Formulation	Size
R35638-100UG	0.5 mg/ml in 1X TBS, pH7.3, with 0.5% BSA (US sourced) and 0.02% sodium azide	100 ug

[Bulk quote request](#)

Availability	1-3 business days
Species Reactivity	Human
Format	Antigen affinity purified
Clonality	Polyclonal (goat origin)
Isotype	Goat Ig
Purity	Antigen affinity
Gene ID	6319
Localization	Cytoplasmic
Applications	Flow Cytometry : 1-2ug/10 ⁶ cells Immunohistochemistry (FFPE) : 5-10ug/ml ELISA (peptide) LOD : 1:64000
Limitations	This SCD1 antibody is available for research use only.



IHC testing of FFPE human liver with SCD1 antibody at 5ug/ml. HIER: steamed with pH6 citrate buffer, AP-staining.



SCD1(+) HepG2 cells were spiked into SCD1(-) human PBLs and FACS tested with SCD1 antibody at 1.25ug/10⁶ cells (green) and CD45 mAb (red).

Description

Additional name(s) for this target protein: Stearoyl-CoA desaturase; SCD

Application Notes

Optimal dilution of the SCD1 antibody should be determined by the researcher.

Immunogen

Amino acids RIKRTGDGNYKSG were used as the immunogen for this SCD1 antibody.

Storage

Aliquot and store the SCD1 antibody at -20oC.