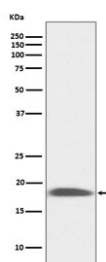


Sca-1 Antibody / Ly6A/E [clone AAIF-12] (RQ5125)

Catalog No.	Formulation	Size
RQ5125	Antibody in PBS with 0.02% sodium azide, 50% glycerol and 0.4-0.5mg/ml BSA	100 ul

[Bulk quote request](#)

Availability	1-2 weeks
Species Reactivity	Mouse
Format	Purified
Clonality	Rabbit Monoclonal
Isotype	Rabbit IgG
Clone Name	AAIF-12
Purity	Affinity purified
UniProt	P05533
Applications	Western Blot : 1:500-1:2000
Limitations	This Sca-1 antibody is available for research use only.



Western blot testing of mouse kidney lysate with Sca-1 antibody. Expected molecular weight: 14-18 kDa.

Description

Stem cell antigen-1 (Sca-1) is a mouse glycosyl phosphatidylinositol-anchored protein and a cell surface marker found on hematopoietic stem cells (HSCs).

Application Notes

Optimal dilution of the Sca-1 antibody should be determined by the researcher.

Immunogen

A synthetic peptide specific to mouse LY6A/E / Sca1 was used as the immunogen for the Sca-1 antibody.

Storage

Store the Sca-1 antibody at -20oC.