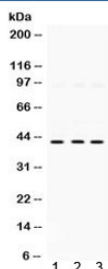


SAPK4 Antibody (R31807)

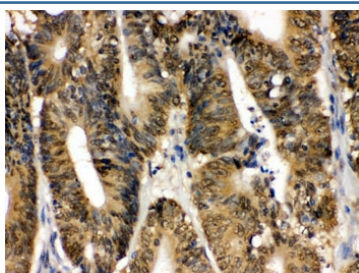
Catalog No.	Formulation	Size
R31807	0.5mg/ml if reconstituted with 0.2ml sterile DI water	100 ug

Bulk quote request

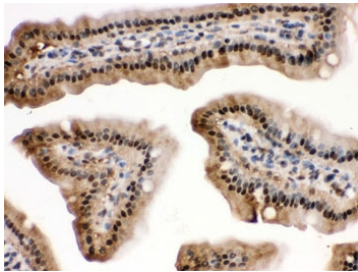
Availability	1-3 business days
Species Reactivity	Human, Mouse, Rat
Format	Antigen affinity purified
Clonality	Polyclonal (rabbit origin)
Isotype	Rabbit IgG
Purity	Antigen affinity
Buffer	Lyophilized from 1X PBS with 2.5% BSA and 0.025% sodium azide
UniProt	O15264
Localization	Nuclear, cytoplasmic
Applications	Western Blot : 0.1-0.5ug/ml IHC (FFPE) : 0.5-1ug/ml
Limitations	This SAPK4 antibody is available for research use only.



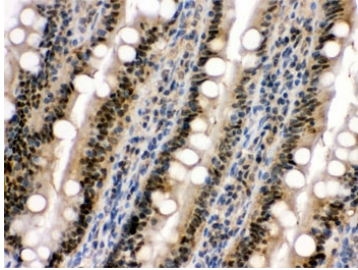
Western blot testing of 1) rat kidney, 2) human HeLa, and 3) human A549 lysate with SAPK4 antibody. Expected/observed molecular weight ~42 kDa.



IHC testing of FFPE human intestinal cancer with SAPK4 antibody. HIER: Boil the paraffin sections in pH 6, 10mM citrate buffer for 20 minutes and allow to cool prior to staining.



IHC testing of FFPE mouse intestine with SAPK4 antibody. HIER: Boil the paraffin sections in pH 6, 10mM citrate buffer for 20 minutes and allow to cool prior to staining.



IHC testing of FFPE rat intestine with SAPK4 antibody. HIER: Boil the paraffin sections in pH 6, 10mM citrate buffer for 20 minutes and allow to cool prior to staining.

Description

MAPK13 (Mitogen-Activated Protein Kinase 13), also called p38-DELTA or Stress-Activated Protein Kinase 4 (SAPK4), is an enzyme that in humans is encoded by the MAPK13 gene. The protein encoded by this gene is a member of the MAP kinase family. MAP kinases act as an integration point for multiple biochemical signals, and are involved in a wide variety of cellular processes such as proliferation, differentiation, transcription regulation and development. This kinase is closely related to p38 MAP kinase, both of which can be activated by proinflammatory cytokines and cellular stress. MAP kinase kinases 3, and 6 can phosphorylate and activate this kinase. Transcription factor ATF2, and microtubule dynamics regulator stathmin have been shown to be the substrates of this kinase.

Application Notes

Optimal dilution of the SAPK4 antibody should be determined by the researcher.

Immunogen

Amino acids KLTVDEWKQHIYKEIVNFSPARKDSRRRSGMKL of human MAPK13/SAPK4 were used as the immunogen for the SAPK4 antibody.

Storage

After reconstitution, the SAPK4 antibody can be stored for up to one month at 4°C. For long-term, aliquot and store at -20°C. Avoid repeated freezing and thawing.