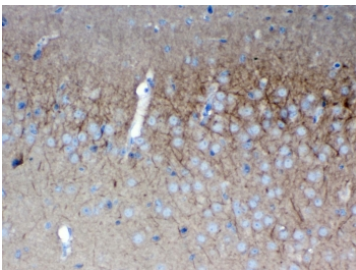


SAP102 Antibody / Synapse-associated protein 102 (R32954)

Catalog No.	Formulation	Size
R32954	0.5mg/ml if reconstituted with 0.2ml sterile DI water	100 ug

Bulk quote request

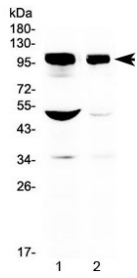
Availability	1-3 business days
Species Reactivity	Mouse, Rat
Predicted Reactivity	Human
Format	Antigen affinity purified
Clonality	Polyclonal (rabbit origin)
Isotype	Rabbit IgG
Purity	Antigen affinity
Buffer	Lyophilized from 1X PBS with 2.5% BSA, 0.025% sodium azide
UniProt	Q92796
Localization	Cytoplasmic, nuclear
Applications	Western Blot : 0.5-1ug/ml IHC (FFPE) : 1-2ug/ml
Limitations	This SAP102 antibody is available for research use only.



IHC testing of FFPE mouse brain tissue with SAP102 antibody at 1ug/ml. Required HIER: steam section in pH6 citrate buffer for 20 min and allow to cool prior to testing.



IHC testing of FFPE rat brain tissue with SAP102 antibody at 1ug/ml. Required HIER: steam section in pH6 citrate buffer for 20 min and allow to cool prior to testing.



Western blot testing of 1) rat brain and 2) mouse brain with SAP102 antibody at 0.5ug/ml. Predicted molecular weight ~90 kDa, commonly observed at ~102 kDa.

Description

Disks large homolog 3 (DLG3) also known as neuroendocrine-DLG or synapse-associated protein 102 (SAP-102) is a protein that in humans is encoded by the DLG3 gene. DLG3 is a member of the membrane-associated guanylate kinase (MAGUK) superfamily of proteins. The encoded protein may play a role in clustering of NMDA receptors at excitatory synapses. It may also negatively regulate cell proliferation through interaction with the C-terminal region of the adenomatous polyposis coli tumor suppressor protein. Mutations in this gene have been associated with X-linked mental retardation.

Application Notes

Optimal dilution of the SAP102 antibody should be determined by the researcher.

Immunogen

A recombinant human protein corresponding to amino acids E749-L817 was used as the immunogen for the SAP102 antibody.

Storage

After reconstitution, the SAP102 antibody can be stored for up to one month at 4°C. For long-term, aliquot and store at -20°C. Avoid repeated freezing and thawing.