

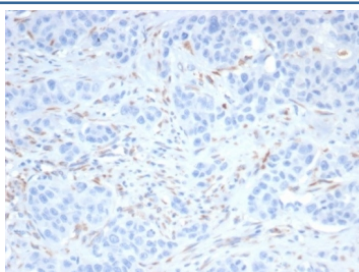
Sal-like 4 Antibody / SALL4 [clone SALL4/7802R] (V4833)

Catalog No.	Formulation	Size
V4833-100UG	0.2 mg/ml in 1X PBS with 0.1 mg/ml BSA (US sourced), 0.05% sodium azide	100 ug
V4833-20UG	0.2 mg/ml in 1X PBS with 0.1 mg/ml BSA (US sourced), 0.05% sodium azide	20 ug
V4833SAF-100UG	1 mg/ml in 1X PBS; BSA free, sodium azide free	100 ug

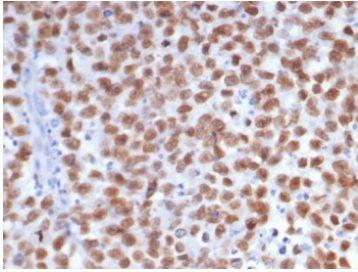
Recombinant **RABBIT MONOCLONAL**

[Bulk quote request](#)

Availability	1-3 business days
Species Reactivity	Human
Format	Purified
Clonality	Recombinant Rabbit Monoclonal
Isotype	Rabbit IgG, kappa
Clone Name	SALL4/7802R
Purity	Protein A affinity
UniProt	Q9UJQ4
Localization	Nucleus, Cytoplasm
Applications	Immunohistochemistry (FFPE) : 1-2ug/ml for 30 min at RT
Limitations	This Sal-like 4 antibody is available for research use only.



IHC staining of FFPE human kidney cancer with Sal-like 4 antibody (clone SALL4/7802R). HIER: boil tissue sections in pH 9 10mM Tris with 1mM EDTA for 20 min and allow to cool before testing.



IHC staining of FFPE human seminoma tissue with Sal-like 4 antibody (clone SALL4/7802R). HIER: boil tissue sections in pH 9 10mM Tris with 1mM EDTA for 20 min and allow to cool before testing.

Description

Sall3 (SALL3, sal-like 3) and Sall4 (SALL4, sal-like 4) are mammalian homologs of the *Drosophila* region-specific homeotic gene *spalt*, which encodes a zinc finger-containing transcription regulator. *Drosophila* *spalt* is an essential genetic component required for the specification of posterior head and anterior tail as opposed to trunk. Sall3 is expressed at 24 weeks of gestation in several regions of the human fetal brain including neurons of the hippocampus formation and of mediodorsal and ventrolateral thalamic nuclei, Purkinje cells of the cerebellum, and a subset of neurons in the brainstem. Sall4 expression in early mouse embryos is gradually confined to the head region and the primitive streak, followed by prominent expression in the developing midbrain, branchial arches, limbs and genital papilla.

Application Notes

Optimal dilution of the Sal-like 4 antibody should be determined by the researcher.

Immunogen

A recombinant partial protein sequence (within amino acids 100-300) from the human protein was used as the immunogen for the Sal-like 4 antibody.

Storage

Aliquot the Sal-like 4 antibody and store frozen at -20oC or colder. Avoid repeated freeze-thaw cycles.