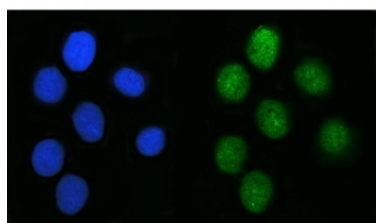


SAGE1 Antibody / CT14 (RQ7560)

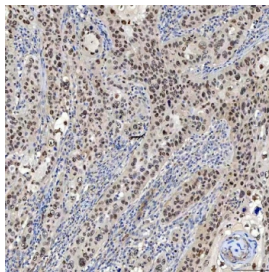
Catalog No.	Formulation	Size
RQ7560	0.5mg/ml if reconstituted with 0.2ml sterile DI water	100 ug

Bulk quote request

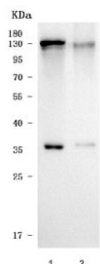
Availability	1-3 business days
Species Reactivity	Human
Format	Antigen affinity purified
Clonality	Polyclonal (rabbit origin)
Isotype	Rabbit IgG
Purity	Antigen affinity purified
Buffer	Lyophilized from 1X PBS with 2% Trehalose
UniProt	Q9NXZ1
Localization	Nuclear
Applications	Western Blot : 0.5-1ug/ml Immunohistochemistry (FFPE) : 2-5ug/ml Immunofluorescence : 5ug/ml Flow Cytometry : 1-3ug/million cells Direct ELISA : 0.1-0.5ug/ml
Limitations	This SAGE1 antibody is available for research use only.



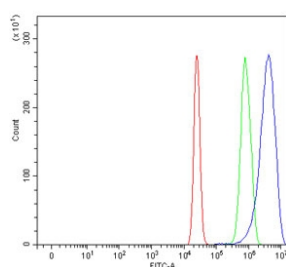
Immunofluorescent staining of FFPE human U-2 OS cells with SAGE1 antibody (green) and DAPI nuclear stain (blue). HIER: steam section in pH6 citrate buffer for 20 min.



IHC staining of FFPE human laryngeal carcinoma tissue with SAGE1 antibody. HIER: boil tissue sections in pH8 EDTA for 20 min and allow to cool before testing.



Western blot testing of human 1) K562 and 2) U-2 OS cell lysate with SAGE1 antibody. Predicted molecular weight ~99 kDa.



Flow cytometry testing of human U-2 OS cells with SAGE1 antibody at 1ug/million cells (blocked with goat sera); Red=cells alone, Green=isotype control, Blue= SAGE1 antibody.

Description

This gene, encoding Sarcoma antigen 1 (SAGE1), also called Cancer/testis antigen 14 (CT14), belongs to a class of genes that are activated in tumors. These genes are expressed in tumors of different histologic types but not in normal tissues, except for spermatogenic cells and, for some, placenta. The proteins encoded by these genes appear to be strictly tumor specific, and hence may be excellent sources of antigens for cancer immunotherapy. This gene is expressed in sarcomas.

Application Notes

Optimal dilution of the SAGE1 antibody should be determined by the researcher.

Immunogen

E. coli-derived recombinant human protein (amino acids D94-K633) was used as the immunogen for the SAGE1 antibody.

Storage

After reconstitution, the SAGE1 antibody can be stored for up to one month at 4°C. For long-term, aliquot and store at -20°C. Avoid repeated freezing and thawing.

