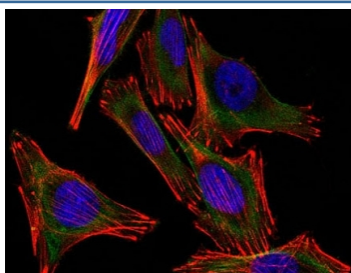


S100B Antibody Cocktail [clone 4C4.9 + S100B/1012] (V3423)

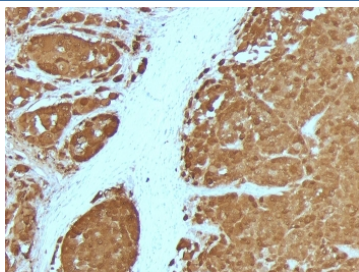
Catalog No.	Formulation	Size
V3423-100UG	0.2 mg/ml in 1X PBS with 0.1 mg/ml BSA (US sourced) and 0.05% sodium azide	100 ug
V3423-20UG	0.2 mg/ml in 1X PBS with 0.1 mg/ml BSA (US sourced) and 0.05% sodium azide	20 ug
V3423SAF-100UG	1 mg/ml in 1X PBS; BSA free, sodium azide free	100 ug

Bulk quote request

Availability	1-3 business days
Species Reactivity	Human
Format	Purified
Clonality	Monoclonal (mouse origin)
Isotype	Mouse IgG2a, kappa
Clone Name	4C4.9 + S100B/1012
Purity	Protein G affinity chromatography
UniProt	P04271
Localization	Cytoplasmic, nuclear
Applications	Immunofluorescence : 1-2ug/ml Immunohistochemistry (FFPE) : 0.25-0.5ug/ml for 30 min at RT
Limitations	This S100B antibody cocktail is available for research use only.



(Left) Confocal Immunofluorescent analysis of A2058 cells using AF488-labeled S100 antibody (green). F-actin filaments were labeled with DyLight 554 Phalloidin (red). DAPI was used to stain the cell nuclei (blue). (Right) Negative control.



IHC testing of FFPE human melanoma with S100B antibody (4C4.9 + S100B/1012).
Required HIER: boiling tissue sections in pH 9 10mM Tris with 1mM EDTA for 10-20 min followed by cooling at RT for 20 min.

Description

S100 belongs to the family of calcium binding proteins. S100A and S100B proteins are two members of the S100 family. S100A is composed of an alpha and a beta chain whereas S100B is composed of two beta chains. This antibody is specific against an epitope located on the beta-chain (i.e. in S-100A and S-100B) but not on the alpha-chain of S-100 (i.e. in S-100A and S100A0). This antibody can be used to localize S-100A and S-100B in various tissue sections. S-100 protein has been found in normal melanocytes, Langerhans cells, histiocytes, chondrocytes, lipocytes, skeletal and cardiac muscle, Schwann cells, epithelial and myoepithelial cells of the breast, salivary and sweat glands, as well as in glial cells. Neoplasms derived from these cells also express S-100 protein, albeit non-uniformly. A large number of well-differentiated tumors of the salivary gland, adipose and cartilaginous tissue, and Schwann cell-derived tumors express S-100 protein. Almost all malignant melanomas and cases of histiocytosis X are positive for S-100 protein.

Application Notes

Optimal dilution of the S100B antibody cocktail should be determined by the researcher.

Immunogen

Purified bovine brain S100 protein (4C4.9) and recombinant full-length human protein (S100B/1012) were used as the immunogen for the S100 antibody cocktail.

Storage

Store the S100B antibody cocktail at 2-8°C (with azide) or aliquot and store at -20°C or colder (without azide).