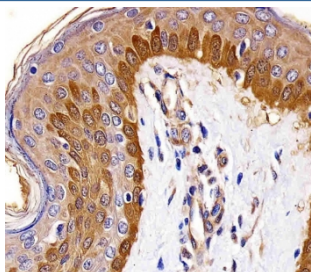


S100A2 Antibody [clone 1592CT417.84.81] (F54489)

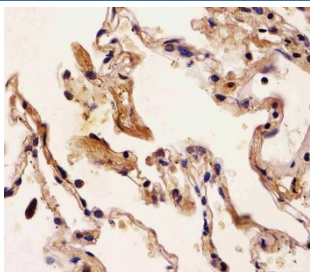
Catalog No.	Formulation	Size
F54489-0.2ML	In 1X PBS, pH 7.4, with 0.09% sodium azide	0.2 ml
F54489-0.05ML	In 1X PBS, pH 7.4, with 0.09% sodium azide	0.05 ml

[Bulk quote request](#)

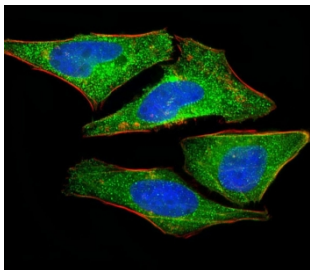
Availability	1-3 business days
Species Reactivity	Human
Format	Purified
Clonality	Monoclonal (mouse origin)
Isotype	IgG1, kappa
Clone Name	1592CT417.84.81
Purity	Protein G affinity
UniProt	P29034
Localization	Cytoplasmic, nuclear
Applications	Western Blot : 1:500-1:2000 Immunohistochemistry (FFPE) : 1:25 Immunofluorescence : 1:25
Limitations	This S100A2 antibody is available for research use only.



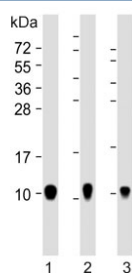
IHC testing of FFPE human skin tissue with S100A2 antibody. HIER: steam section in pH6 citrate buffer for 20 min and allow to cool prior to staining.



IHC testing of FFPE human lung tissue with S100A2 antibody. HIER: steam section in pH6 citrate buffer for 20 min and allow to cool prior to staining.



Immunofluorescent staining of fixed and permeabilized human HeLa cells with S100A2 antibody (green), DAPI nuclear stain (blue) and anti-Actin (red).



Western blot testing of human 1) A431, 2) HACAT and 3) SW480 cell lysate with S100A2 antibody. Expected molecular weight ~11 kDa.

Description

May function as calcium sensor and modulator, contributing to cellular calcium signaling. May function by interacting with other proteins, such as TPR-containing proteins, and indirectly play a role in many physiological processes. May also play a role in suppressing tumor cell growth.

Application Notes

The stated application concentrations are suggested starting points. Titration of the S100A2 antibody may be required due to differences in protocols and secondary/substrate sensitivity.

Immunogen

Recombinant human protein was used as the immunogen for the S100A2 antibody.

Storage

Aliquot the S100A2 antibody and store frozen at -20°C or colder. Avoid repeated freeze-thaw cycles.