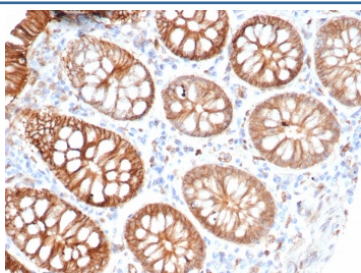


S100A16 Antibody [clone S100A16/7411] (V4719)

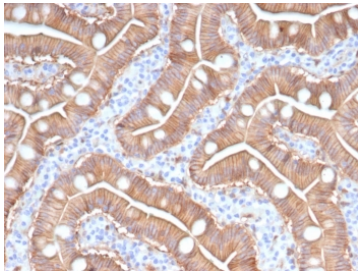
Catalog No.	Formulation	Size
V4719-100UG	0.2 mg/ml in 1X PBS with 0.1 mg/ml BSA (US sourced), 0.05% sodium azide	100 ug
V4719-20UG	0.2 mg/ml in 1X PBS with 0.1 mg/ml BSA (US sourced), 0.05% sodium azide	20 ug
V4719SAF-100UG	1 mg/ml in 1X PBS; BSA free, sodium azide free	100 ug

[Bulk quote request](#)

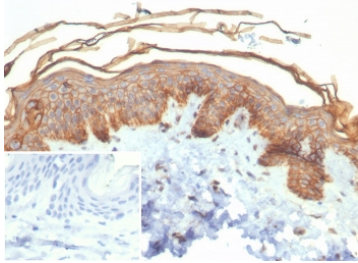
Availability	1-3 business days
Species Reactivity	Human
Format	Purified
Clonality	Monoclonal (mouse origin)
Isotype	Mouse IgG2, kappa
Clone Name	S100A16/7411
Purity	Protein A/G affinity
UniProt	Q96FQ6
Localization	Nucleus, Cytoplasm
Applications	Immunohistochemistry (FFPE) : 1-2ug/ml for 30 min at RT Western Blot : 2-4ug/ml
Limitations	This S100A16 antibody is available for research use only.



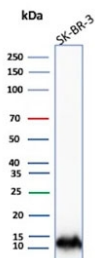
IHC staining of FFPE human colon carcinoma tissue with S100A16 antibody (clone S100A16/7411). HIER: boil tissue sections in pH 9 10mM Tris with 1mM EDTA for 20 min and allow to cool before testing.



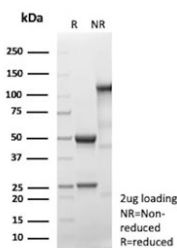
IHC staining of FFPE human duodenum tissue with S100A16 antibody (clone S100A16/7411). HIER: boil tissue sections in pH 9 10mM Tris with 1mM EDTA for 20 min and allow to cool before testing.



IHC staining of FFPE human skin tissue with S100A16 antibody (clone S100A16/7411). HIER: boil tissue sections in pH 9 10mM Tris with 1mM EDTA for 20 min and allow to cool before testing.



Western blot testing of human SK-BR-3 cell lysate with S100A16 antibody. Predicted molecular weight ~12 kDa.



SDS-PAGE analysis of purified, BSA-free S100A16 antibody (clone S100A16/7411) as confirmation of integrity and purity.

Description

The S-100 protein family consists of a group of calcium-binding proteins that are exclusively expressed in vertebrates and exhibit cell and tissue-specific expression. The expression levels of its members differ in various pathological conditions. The extracellular functions of the S-100 family may include the ability to enhance neurite outgrowth, involvement in inflammation and motility of tumor cells. S-100A16 (S100 calcium binding protein A16), also known as AAG13 (aging-associated gene 13 protein), S100F or DT1P1A7, is a 103 amino acid nuclear and cytoplasmic protein that exists as a homodimer that binds one calcium ion per monomer. A member of the EF-hand superfamily, S-100A16 contains two EF-hand domains and is encoded by a gene that maps to human chromosome 1q21.3.

Application Notes

Optimal dilution of the S100A16 antibody should be determined by the researcher.

Immunogen

A recombinant partial protein sequence (within amino acids 1-103) from the human protein was used as the immunogen for the S100A16 antibody.

Storage

Aliquot the S100A16 antibody and store frozen at -20oC or colder. Avoid repeated freeze-thaw cycles.