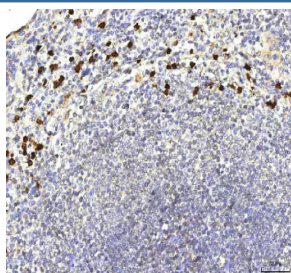


S100A12 Antibody (RQ8717)

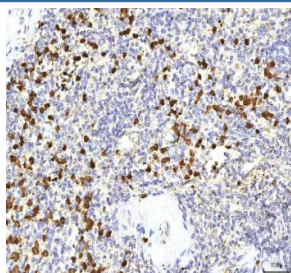
Catalog No.	Formulation	Size
RQ8717	0.5mg/ml if reconstituted with 0.2ml sterile DI water	100 ug

Bulk quote request

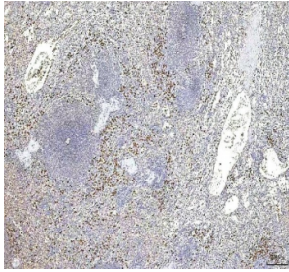
Availability	1-3 days
Species Reactivity	Human
Format	Antigen affinity purified
Clonality	Polyclonal (rabbit origin)
Isotype	Rabbit IgG
Purity	Antigen affinity chromatography
Buffer	Lyophilized from 1X PBS with 2% Trehalose
UniProt	P80511
Applications	Immunohistochemistry (FFPE) : 2-5ug/ml
Limitations	This S100A12 antibody is available for research use only.



IHC staining of FFPE human spleen tissue with S100A12 antibody. HIER: boil tissue sections in pH8 EDTA for 20 min and allow to cool before testing.



IHC staining of FFPE human spleen tissue with S100A12 antibody. HIER: boil tissue sections in pH8 EDTA for 20 min and allow to cool before testing.



IHC staining of FFPE human spleen tissue with S100A12 antibody. HIER: boil tissue sections in pH8 EDTA for 20 min and allow to cool before testing.

Description

S100 calcium-binding protein A12 (S100A12) is a protein that in humans is encoded by the S100A12 gene. The protein encoded by this gene is a member of the S100 family of proteins containing 2 EF-hand calcium-binding motifs. S100 proteins are localized in the cytoplasm and/or nucleus of a wide range of cells, and involved in the regulation of a number of cellular processes such as cell cycle progression and differentiation. S100 genes include at least 13 members which are located as a cluster on chromosome 1q21. This protein is proposed to be involved in specific calcium-dependent signal transduction pathways and its regulatory effect on cytoskeletal components may modulate various neutrophil activities. The protein includes an antimicrobial peptide which has antibacterial activity.

Application Notes

Optimal dilution of the S100A12 antibody should be determined by the researcher.

Immunogen

A synthetic peptide from the C-terminus of human S100A12 was used as the immunogen for the S100A12 antibody.

Storage

After reconstitution, the S100A12 antibody can be stored for up to one month at 4°C. For long-term, aliquot and store at -20°C. Avoid repeated freezing and thawing.