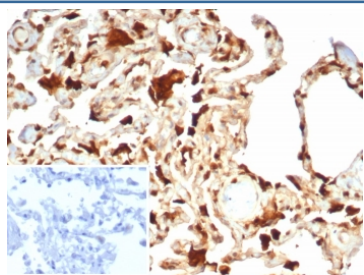


S100A11 Antibody / S100 calcium binding protein A11 [clone S100A11/7392] (V4731)

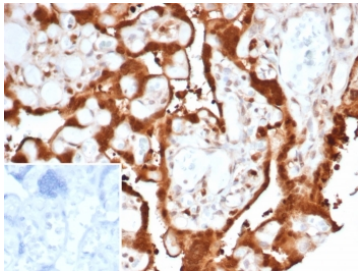
Catalog No.	Formulation	Size
V4731-100UG	0.2 mg/ml in 1X PBS with 0.1 mg/ml BSA (US sourced), 0.05% sodium azide	100 ug
V4731-20UG	0.2 mg/ml in 1X PBS with 0.1 mg/ml BSA (US sourced), 0.05% sodium azide	20 ug
V4731SAF-100UG	1 mg/ml in 1X PBS; BSA free, sodium azide free	100 ug

Bulk quote request

Availability	1-3 business days
Species Reactivity	Human
Format	Purified
Clonality	Monoclonal (mouse origin)
Isotype	Mouse IgG1, kappa
Clone Name	S100A11/7392
Purity	Protein A/G affinity
UniProt	P31949
Localization	Cytoplasm, Nucleus
Applications	Immunohistochemistry (FFPE) : 1-2ug/ml for 30 min at RT
Limitations	This S100A11 antibody is available for research use only.



IHC staining of FFPE human lung tissue with S100A11 antibody (clone S100A11/7392). Inset: PBS used in place of primary Ab (secondary Ab negative control). HIER: boil tissue sections in pH 9 10mM Tris with 1mM EDTA for 20 min and allow to cool before testing.



IHC staining of FFPE human placental tissue with S100A11 antibody (clone S100A11/7392). Inset: PBS used in place of primary Ab (secondary Ab negative control).
HIER: boil tissue sections in pH 9 10mM Tris with 1mM EDTA for 20 min and allow to cool before testing.

Description

S100A11 is a Ca^{2+} -binding protein of the S100 family. The proteins comprising the S-100 protein family have two EF-hand structures per molecule of protein. Expression of these family members occurs primarily in neurons or retinal photoreceptor cells, and may also be involved in a wide variety of cellular functions including cell growth, cell-cell communication, energy metabolism and intracellular signal transduction. They have also been linked to various pathologies, including Alzheimer's disease, schizophrenia and cancer. S100A11 is highly expressed in lung tissue and is also expressed in kidney, liver, brain, heart and smooth muscle. It is an important androgen-responsive protein produced by Sertoli cells and might play a role in spermatogenesis regulation.

Application Notes

Optimal dilution of the S100A11 antibody should be determined by the researcher.

Immunogen

Recombinant full-length human S100A11 protein was used as the immunogen for the S100A11 antibody.

Storage

Aliquot the S100A11 antibody and store frozen at -20°C or colder. Avoid repeated freeze-thaw cycles.