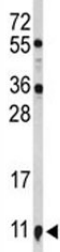


S100A10 Antibody (F51516)

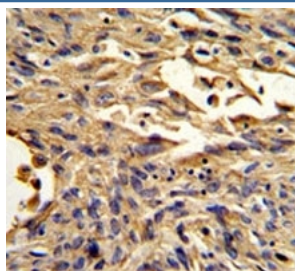
Catalog No.	Formulation	Size
F51516-0.4ML	In 1X PBS, pH 7.4, with 0.09% sodium azide	0.4 ml
F51516-0.08ML	In 1X PBS, pH 7.4, with 0.09% sodium azide	0.08 ml

Bulk quote request

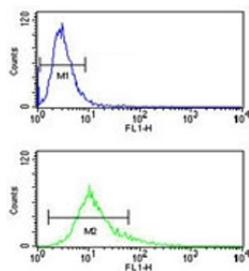
Availability	1-3 business days
Species Reactivity	Human
Predicted Reactivity	Bovine, Pig, Rabbit
Format	Antigen affinity purified
Clonality	Polyclonal (rabbit origin)
Isotype	Rabbit Ig
Purity	Antigen affinity
UniProt	P60903
Applications	Western Blot : 1:1000 IHC (Paraffin) : 1:50-1:100 Flow Cytometry : 1:10-1:50
Limitations	This S100A10 antibody is available for research use only.



Western blot analysis of S100A10 antibody and NCI-H460 lysate.



IHC analysis of FFPE human lung carcinoma stained with S100A10 antibody



S100A10 antibody flow cytometry analysis of NCI-H460 cells (green) compared to a [negative control](http://www.ncbi.nlm.nih.gov/search_result.php?search_txt=n1001) (blue). FITC-conjugated goat-anti-rabbit secondary Ab was used for the analysis.

Description

The protein encoded by this gene is a member of the S100 family of proteins containing 2 EF-hand calcium-binding motifs. S100 proteins are localized in the cytoplasm and/or nucleus of a wide range of cells, and involved in the regulation of a number of cellular processes such as cell cycle progression and differentiation.

Application Notes

Titration of the S100A10 antibody may be required due to differences in protocols and secondary/substrate sensitivity.

Immunogen

A portion of amino acids 12-40 from the human protein was used as the immunogen for this S100A10 antibody.

Storage

Aliquot the S100A10 antibody and store frozen at -20oC or colder. Avoid repeated freeze-thaw cycles.