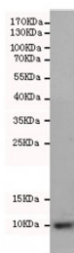


## S100 beta Antibody [clone 5G3-C11] (F54011)

| Catalog No.  | Formulation                                    | Size   |
|--------------|--|--------|
| F54011-0.1ML | In PBS with 50% glycerol and 0.03% ProClin 300 | 0.1 ml |

**Bulk quote request**

|                             |   |
|-----------------------------|---|
| <b>Availability</b>         | 1-3 business days   |
| <b>Species Reactivity</b>   | Rat   |
| <b>Predicted Reactivity</b> | Human   |
| <b>Format</b>               | Purified  |
| <b>Clonality</b>            | Monoclonal (mouse origin)                                   |
| <b>Isotype</b>              | Mouse IgG2b   |
| <b>Clone Name</b>           | 5G3-C11   |
| <b>Purity</b>               | Protein G affinity  |
| <b>UniProt</b>              | P04271  |
| <b>Applications</b>         | Western Blot : 1:500  |
| <b>Limitations</b>          | This S100 beta antibody is available for research use only. |



Western blot testing of rat brain lysate with S100 beta antibody at 1:500 diluted.  
Predicted molecular weight ~11 kDa.

## Description

Weakly binds calcium but binds zinc very tightly-distinct binding sites with different affinities exist for both ions on each monomer. Physiological concentrations of potassium ion antagonize the binding of both divalent cations, especially affecting high-affinity calcium-binding sites. Binds to and initiates the activation of STK38 by releasing autoinhibitory intramolecular interactions within the kinase. Interaction with AGER after myocardial infarction may play a role in myocyte apoptosis by activating ERK1/2 and p53/TP53 signaling. Could assist ATAD3A cytoplasmic processing, preventing aggregation and favoring mitochondrial localization. May mediate calcium-dependent regulation on many physiological processes by interacting with other proteins, such as TPR-containing proteins, and modulating their activity.

## Application Notes

The stated application concentrations are suggested starting points. Titration of the S100 beta antibody may be required due to differences in protocols and secondary/substrate sensitivity.

## Immunogen

A S100B synthetic peptide was used as the immunogen for this S100 beta antibody.

## Storage

Store the S100 beta antibody at -20oC.