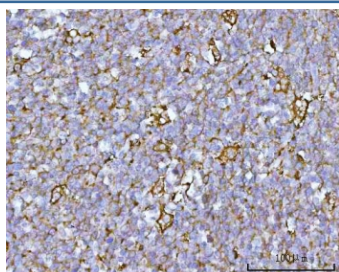


RUFY4 Antibody / RUN and FYVE domain-containing protein 4 (RQ7884)

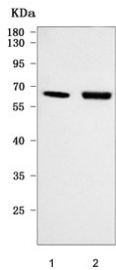
Catalog No.	Formulation	Size
RQ7884	0.5mg/ml if reconstituted with 0.2ml sterile DI water	100 ug

Bulk quote request

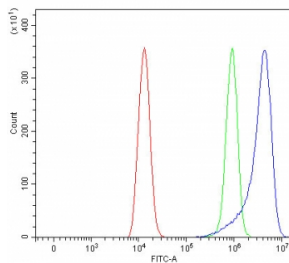
Availability	1-3 business days
Species Reactivity	Human, Monkey
Format	Antigen affinity purified
Clonality	Polyclonal (rabbit origin)
Isotype	Rabbit IgG
Purity	Antigen affinity purified
Buffer	Lyophilized from 1X PBS with 2% Trehalose
UniProt	Q6ZNE9
Localization	Cytoplasmic
Applications	Western Blot : 0.5-1ug/ml Immunohistochemistry (FFPE) : 2-5ug/ml Flow Cytometry : 1-3ug/million cells Direct ELISA : 0.1-0.5ug/ml
Limitations	This RUFY4 antibody is available for research use only.



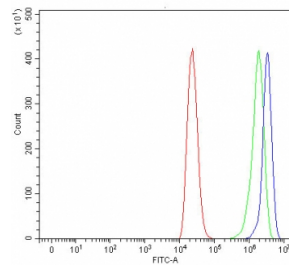
IHC staining of FFPE human tonsil tissue with RUFY4 antibody. HIER: boil tissue sections in pH8 EDTA for 20 min and allow to cool before testing.



Western blot testing of 1) human placenta and 2) monkey COS-7 cell lysate with RUFY4 antibody. Predicted molecular weight ~64 kDa.



Flow cytometry testing of human HEL cells with RUFY4 antibody at 1ug/million cells (blocked with goat sera); Red=cells alone, Green=isotype control, Blue= RUFY4 antibody.



Flow cytometry testing of human ThP-1 cells with RUFY4 antibody at 1ug/million cells (blocked with goat sera); Red=cells alone, Green=isotype control, Blue= RUFY4 antibody.

Description

Enables phosphatidylinositol-3-phosphate binding activity. Involved in autophagosome assembly; cellular response to interleukin-4; and positive regulation of macroautophagy. Located in autophagosome.

Application Notes

Optimal dilution of the RUFY4 antibody should be determined by the researcher.

Immunogen

E. coli-derived recombinant human protein (amino acids M1-K553) was used as the immunogen for the RUFY4 antibody.

Storage

After reconstitution, the RUFY4 antibody can be stored for up to one month at 4oC. For long-term, aliquot and store at -20oC. Avoid repeated freezing and thawing.