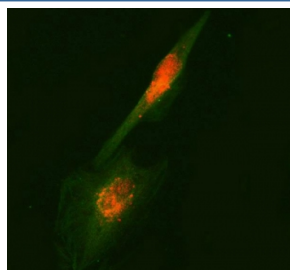


RUFY2 Antibody / RUN and FYVE domain-containing protein 2 (RQ7920)

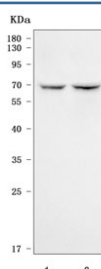
Catalog No.	Formulation	Size
RQ7920	0.5mg/ml if reconstituted with 0.2ml sterile DI water	100 ug

Bulk quote request

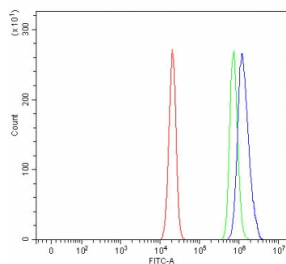
Availability	1-3 business days
Species Reactivity	Human
Format	Antigen affinity purified
Clonality	Polyclonal (rabbit origin)
Isotype	Rabbit IgG
Purity	Antigen affinity purified
Buffer	Lyophilized from 1X PBS with 2% Trehalose
UniProt	Q8WXA3
Applications	Western Blot : 0.5-1ug/ml Immunofluorescence (FFPE) : 5ug/ml Flow Cytometry : 1-3ug/million cells Direct ELISA : 0.1-0.5ug/ml
Limitations	This RUFY2 antibody is available for research use only.



Immunofluorescent staining of FFPE human U-87 MG cells with RUFY2 antibody (red) and Beta Tubulin mAb (green). HIER: steam section in pH6 citrate buffer for 20 min.



Western blot testing of human 1) PC-3 and 2) U-251 cell lysate with RUFY2 antibody. Predicted molecular weight ~70 kDa.



Flow cytometry testing of human U-2 OS cells with RUFY2 antibody at 1ug/million cells (blocked with goat sera); Red=cells alone, Green=isotype control, Blue= RUFY2 antibody.

Description

RUN and FYVE domain containing 2 (RUFY2) is a protein that in humans is encoded by the RUFY2 gene. Enables SH3 domain binding activity. Predicted to be involved in regulation of endocytosis. Located in cytoplasm.

Application Notes

Optimal dilution of the RUFY2 antibody should be determined by the researcher.

Immunogen

E. coli-derived recombinant human protein (amino acids E239-K551) was used as the immunogen for the RUFY2 antibody.

Storage

After reconstitution, the RUFY2 antibody can be stored for up to one month at 4oC. For long-term, aliquot and store at -20oC. Avoid repeated freezing and thawing.