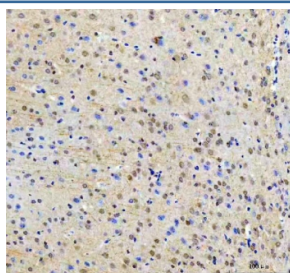


RTF1 Antibody / RNA polymerase-associated protein RTF1 homolog (RQ7901)

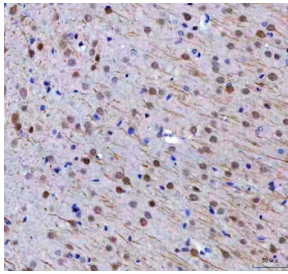
Catalog No.	Formulation	Size
RQ7901	0.5mg/ml if reconstituted with 0.2ml sterile DI water	100 ug

Bulk quote request

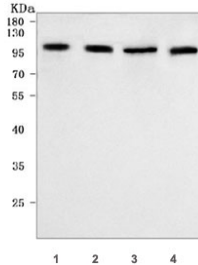
Availability	1-3 business days
Species Reactivity	Human, Monkey
Format	Antigen affinity purified
Clonality	Polyclonal (rabbit origin)
Isotype	Rabbit IgG
Purity	Antigen affinity purified
Buffer	Lyophilized from 1X PBS with 2% Trehalose
UniProt	Q92541
Localization	Nuclear
Applications	Western Blot : 0.5-1ug/ml Flow Cytometry : 1-3ug/million cells Immunohistochemistry (FFPE) : 2-5ug/ml Direct ELISA : 0.1-0.5ug/ml
Limitations	This RTF1 antibody is available for research use only.



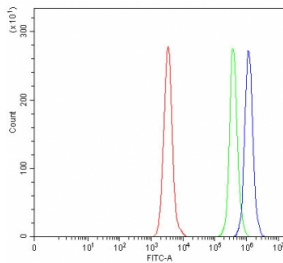
IHC staining of FFPE mouse brain tissue with RTF1 antibody. HIER: boil tissue sections in pH8 EDTA for 20 min and allow to cool before testing.



IHC staining of FFPE rat brain tissue with RTF1 antibody. HIER: boil tissue sections in pH8 EDTA for 20 min and allow to cool before testing.



Western blot testing of 1) human Jurkat, 2) human SW620, 3) human MCF7 and 4) monkey COS-7 cell lysate with RTF1 antibody. Predicted molecular weight ~80 kDa, commonly observed at 80-100 kDa.



Flow cytometry testing of human Daudi cells with RTF1 antibody at 1ug/million cells (blocked with goat sera); Red=cells alone, Green=isotype control, Blue= RTF1 antibody.

Description

Rtf1, Paf1/RNA polymerase II complex component, homolog (*S. cerevisiae*) is a protein that in humans is encoded by the RTF1 gene. This locus may represent a gene involved in regulation of transcription elongation and chromatin remodeling, based on studies of similar proteins in other organisms. The encoded protein may bind single-stranded DNA.

Application Notes

Optimal dilution of the RTF1 antibody should be determined by the researcher.

Immunogen

E. coli-derived recombinant human protein (amino acids S77-K705) was used as the immunogen for the RTF1 antibody.

Storage

After reconstitution, the RTF1 antibody can be stored for up to one month at 4°C. For long-term, aliquot and store at -20°C. Avoid repeated freezing and thawing.