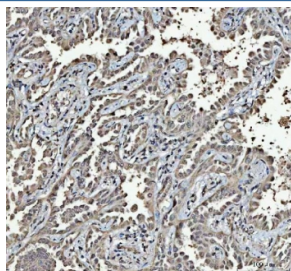


RTCB Antibody / C22orf28 (RQ7879)

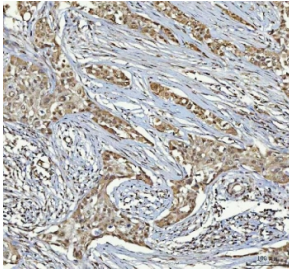
Catalog No.	Formulation	Size
RQ7879	0.5mg/ml if reconstituted with 0.2ml sterile DI water	100 ug

Bulk quote request

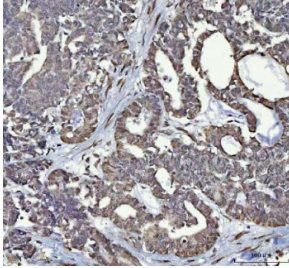
Availability	1-3 business days
Species Reactivity	Human
Format	Antigen affinity purified
Clonality	Polyclonal (rabbit origin)
Isotype	Rabbit IgG
Purity	Antigen affinity purified
Buffer	Lyophilized from 1X PBS with 2% Trehalose
UniProt	Q9Y3I0
Localization	Nuclear, cytoplasmic
Applications	Western Blot : 0.5-1ug/ml Immunofluorescence (FFPE) : 5ug/ml Flow Cytometry : 1-3ug/million cells Immunohistochemistry (FFPE) : 2-5ug/ml Direct ELISA : 0.1-0.5ug/ml
Limitations	This RTCB antibody is available for research use only.



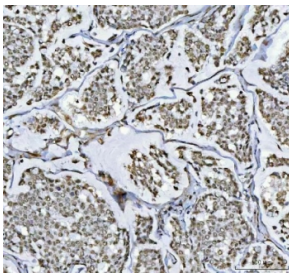
IHC staining of FFPE human lung cancer tissue with RTCB antibody. HIER: boil tissue sections in pH8 EDTA for 20 min and allow to cool before testing.



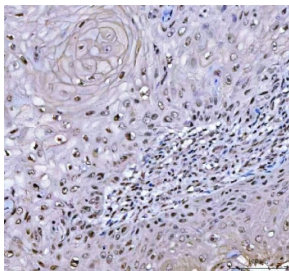
IHC staining of FFPE human parotid acinar cell carcinoma tissue with RTCB antibody. HIER: boil tissue sections in pH8 EDTA for 20 min and allow to cool before testing.



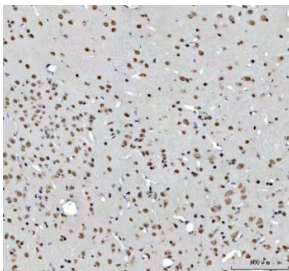
IHC staining of FFPE human ovarian cancer tissue with RTCB antibody. HIER: boil tissue sections in pH8 EDTA for 20 min and allow to cool before testing.



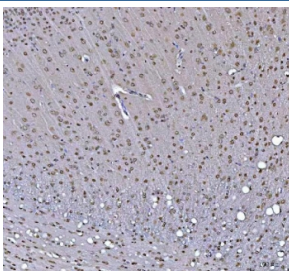
IHC staining of FFPE human breast cancer tissue with RTCB antibody. HIER: boil tissue sections in pH8 EDTA for 20 min and allow to cool before testing.



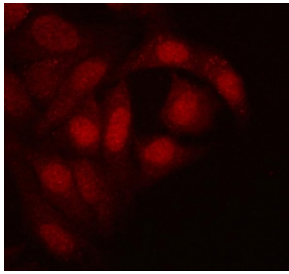
IHC staining of FFPE human skin squamous cell carcinoma tissue with RTCB antibody. HIER: boil tissue sections in pH8 EDTA for 20 min and allow to cool before testing.



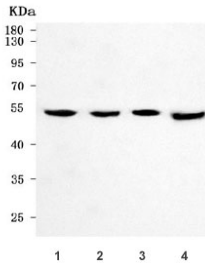
IHC staining of FFPE mouse brain tissue with RTCB antibody. HIER: boil tissue sections in pH8 EDTA for 20 min and allow to cool before testing.



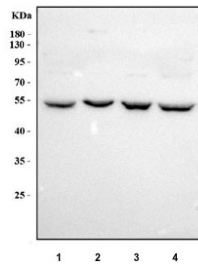
IHC staining of FFPE rat brain tissue with RTCB antibody. HIER: boil tissue sections in pH8 EDTA for 20 min and allow to cool before testing.



Immunofluorescent staining of FFPE human HeLa cells with RTCB antibody (red). HIER: steam section in pH6 citrate buffer for 20 min.



Western blot testing of human 1) HeLa, 2) Jurkat, 3) HL60 and 4) 293T cell lysate with RTCB antibody. Predicted molecular weight ~55 kDa.



Western blot testing of human 1) HeLa, 2) Jurkat, 3) 293T and 4) HepG2 cell lysate with RTCB antibody. Predicted molecular weight ~55 kDa.

Description

RNA 2',3'-cyclic phosphate and 5'-OH ligase is a protein that in humans is encoded by the RTCB gene. Enables RNA ligase (ATP) activity and vinculin binding activity. Involved in tRNA splicing, via endonucleolytic cleavage and ligation. Located in cytosol and nucleoplasm. Part of tRNA-splicing ligase complex.

Application Notes

Optimal dilution of the RTCB antibody should be determined by the researcher.

Immunogen

E. coli-derived recombinant human protein (amino acids H227-G505) was used as the immunogen for the RTCB antibody.

Storage

After reconstitution, the RTCB antibody can be stored for up to one month at 4°C. For long-term, aliquot and store at -20°C. Avoid repeated freezing and thawing.

