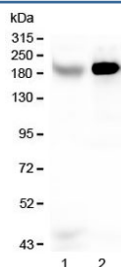


RRBP1 Antibody / Ribosome binding protein 1 (RQ4954)

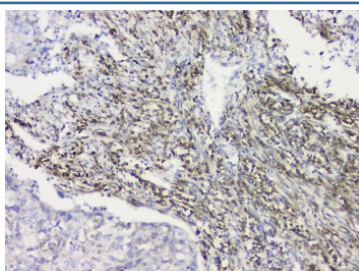
Catalog No.	Formulation	Size
RQ4954	0.5mg/ml if reconstituted with 0.2ml sterile DI water	100 ug

Bulk quote request

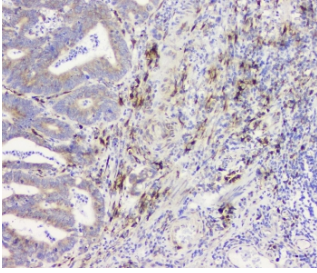
Availability	1-3 business days
Species Reactivity	Human
Format	Antigen affinity purified
Clonality	Polyclonal (rabbit origin)
Isotype	Rabbit IgG
Purity	Antigen affinity purified
Buffer	Lyophilized from 1X PBS with 2% Trehalose and 0.025% sodium azide
UniProt	Q9P2E9
Applications	Western Blot : 0.5-1ug/ml Immunohistochemistry (FFPE) : 1-2ug/ml Flow Cytometry : 1-3ug/10 ⁶ cells Immunofluorescence/Immunocytochemistry : 2-4ug/ml
Limitations	This RRBP1 antibody is available for research use only.



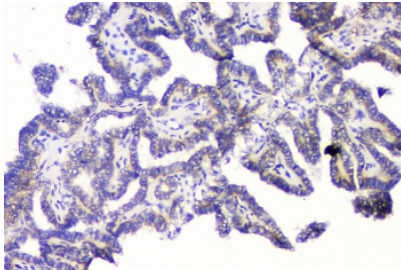
Western blot testing of human 1) Caco-2 and 2) HepG2 lysate with RRBP1 antibody at 0.5ug/ml. Expected molecular weight ~180 kDa.



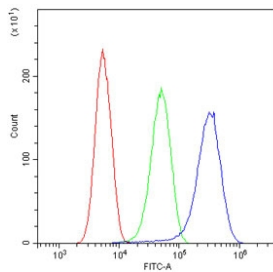
IHC staining of FFPE human lung cancer with RRBP1 antibody at 1ug/ml. HIER: boil tissue sections in pH6, 10mM citrate buffer, for 10-20 min and allow to cool before testing.



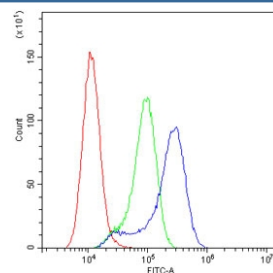
IHC staining of FFPE human intestinal cancer with RRBP1 antibody at 1ug/ml. HIER: boil tissue sections in pH6, 10mM citrate buffer, for 10-20 min and allow to cool before testing.



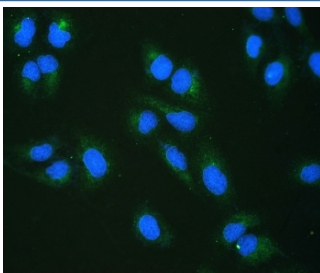
IHC staining of FFPE human thyroid cancer with RRBP1 antibody at 1ug/ml. HIER: boil tissue sections in pH6, 10mM citrate buffer, for 10-20 min and allow to cool before testing.



Flow cytometry testing of human SiHa cells with RRBP1 antibody at 1ug/10⁶ cells (blocked with goat sera); Red=cells alone, Green=isotype control, Blue= RRBP1 antibody.



Flow cytometry testing of human A549 cells with RRBP1 antibody at 1ug/10⁶ cells (blocked with goat sera); Red=cells alone, Green=isotype control, Blue= RRBP1 antibody.



IF/ICC staining of FFPE human U-2 OS cells with RRBP1 antibody (green) at 2ug/ml and DAPI nuclear stain (blue). HIER: steam section in pH6 citrate buffer for 20 min.

Description

Ribosome-binding protein 1, also referred to as p180, is a protein that in humans is encoded by the RRBP1 gene. It is mapped to 20p12.1. This gene encodes a ribosome-binding protein of the endoplasmic reticulum (ER) membrane. Studies suggest that this gene plays a role in ER proliferation, secretory pathways and secretory cell differentiation, and mediation of ER-microtubule interactions. Alternative splicing has been observed and protein isoforms are characterized by regions of N-terminal decapeptide and C-terminal heptad repeats. Splicing of the tandem repeats results in variations in ribosome-binding affinity and secretory function. The full-length nature of variants which differ in repeat length has not been determined. Pseudogenes of this gene have been identified on chromosomes 3 and 7, and RRBP1 has been

excluded as a candidate gene in the cause of Alagille syndrome, the result of a mutation in a nearby gene on chromosome 20p12.

Application Notes

Optimal dilution of the RRBP1 antibody should be determined by the researcher.

Immunogen

Amino acids EKEKKLTSDLGRAATRLQELLKTTQEQLAREKDTVKKLQEQLEKAED from the human protein were used as the immunogen for the RRBP1 antibody.

Storage

After reconstitution, the RRBP1 antibody can be stored for up to one month at 4°C. For long-term, aliquot and store at -20°C. Avoid repeated freezing and thawing.