

RPRD1B Antibody / C20orf77 (RQ7960)

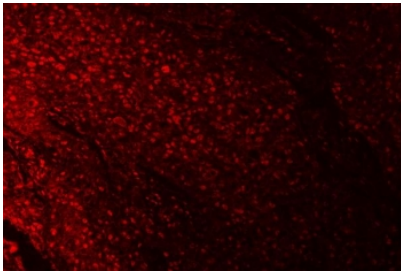
Catalog No.	Formulation	Size
RQ7960	0.5mg/ml if reconstituted with 0.2ml sterile DI water	100 ug

Bulk quote request

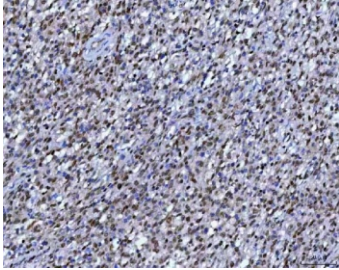
Availability	1-3 business days
Species Reactivity	Human, Monkey
Format	Antigen affinity purified
Clonality	Polyclonal (rabbit origin)
Isotype	Rabbit IgG
Purity	Antigen affinity purified
Buffer	Lyophilized from 1X PBS with 2% Trehalose
UniProt	Q9NQG5
Localization	Nuclear
Applications	Western Blot : 0.5-1ug/ml Immunohistochemistry (FFPE) : 2-5ug/ml Immunofluorescence (FFPE) : 5ug/ml Flow Cytometry : 1-3ug/million cells Direct ELISA : 0.1-0.5ug/ml
Limitations	This RPRD1B antibody is available for research use only.



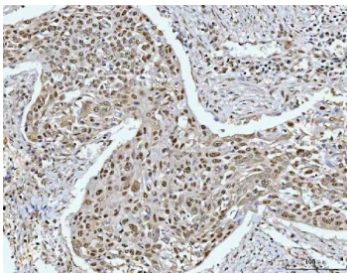
Immunofluorescent staining of FFPE human U-2 OS cells with RPRD1B antibody (red) and Beta Tubulin mAb (green). HIER: steam section in pH6 citrate buffer for 20 min.



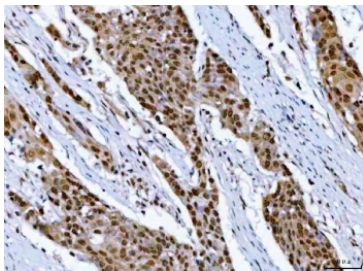
Immunofluorescent staining of FFPE human esophageal squamous cell carcinoma tissue with RPRD1B antibody (red). HIER: steam section in pH8 EDTA buffer for 20 min.



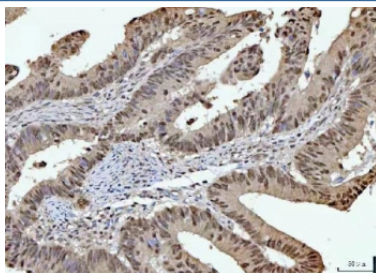
IHC staining of FFPE human B cell lymphoma tissue with RPRD1B antibody. HIER: boil tissue sections in pH8 EDTA for 20 min and allow to cool before testing.



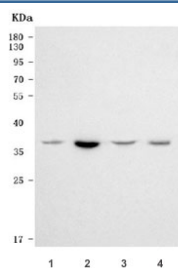
IHC staining of FFPE human esophageal squamous carcinoma tissue with RPRD1B antibody. HIER: boil tissue sections in pH8 EDTA for 20 min and allow to cool before testing.



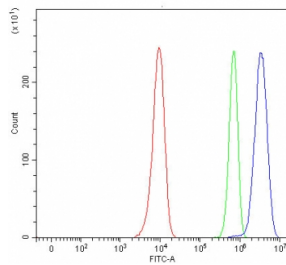
IHC staining of FFPE human esophageal squamous carcinoma tissue with RPRD1B antibody. HIER: boil tissue sections in pH8 EDTA for 20 min and allow to cool before testing.



IHC staining of FFPE human rectal cancer tissue with RPRD1B antibody. HIER: boil tissue sections in pH8 EDTA for 20 min and allow to cool before testing.



Western blot testing of 1) human HeLa, 2) human Jurkat, 3) human Caco-2 and 4) monkey COS-7 cell lysate with RPRD1B antibody. Predicted molecular weight ~37 kDa.



Flow cytometry testing of human HeLa cells with RPRD1B antibody at 1ug/million cells (blocked with goat sera); Red=cells alone, Green=isotype control, Blue= RPRD1B antibody.

Description

Enables RNA polymerase II complex binding activity and identical protein binding activity. Involved in positive regulation of cell population proliferation; regulation of cell cycle process; and regulation of transcription by RNA polymerase II. Located in nucleoplasm. Part of RNA polymerase II, holoenzyme.

Application Notes

Optimal dilution of the RPRD1B antibody should be determined by the researcher.

Immunogen

E. coli-derived recombinant human protein (amino acids R79-K272) was used as the immunogen for the RPRD1B antibody.

Storage

After reconstitution, the RPRD1B antibody can be stored for up to one month at 4oC. For long-term, aliquot and store at -20oC. Avoid repeated freezing and thawing.