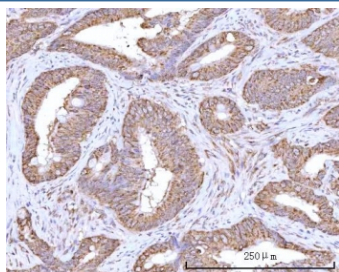


RPN1 Antibody / Ribophorin 1 (RQ7847)

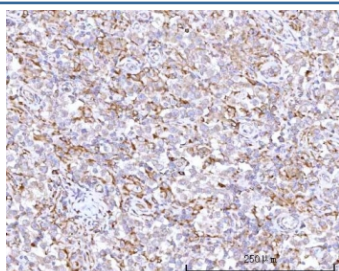
Catalog No.	Formulation	Size
RQ7847	0.5mg/ml if reconstituted with 0.2ml sterile DI water	100 ug

Bulk quote request

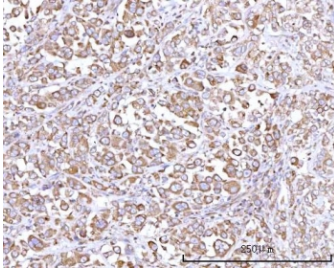
Availability	1-3 business days
Species Reactivity	Human
Format	Antigen affinity purified
Clonality	Polyclonal (rabbit origin)
Isotype	Rabbit IgG
Purity	Antigen affinity purified
Buffer	Lyophilized from 1X PBS with 2% Trehalose
UniProt	P04843
Applications	Western Blot : 0.5-1ug/ml Immunohistochemistry (FFPE) : 2-5ug/ml Flow Cytometry : 1-3ug/million cells Direct ELISA : 0.1-0.5ug/ml
Limitations	This RPN1 antibody is available for research use only.



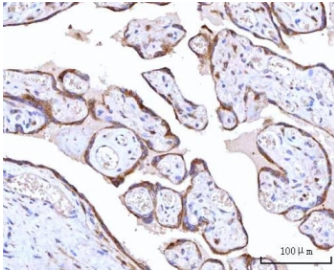
IHC staining of FFPE human rectum adenocarcinoma tissue with RPN1 antibody. HIER: boil tissue sections in pH8 EDTA for 20 min and allow to cool before testing.



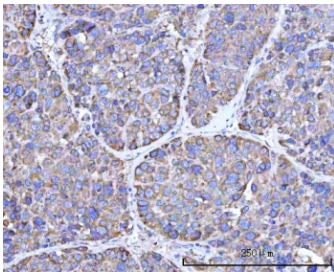
IHC staining of FFPE human testicular seminoma tissue with RPN1 antibody. HIER: boil tissue sections in pH8 EDTA for 20 min and allow to cool before testing.



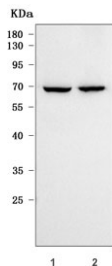
IHC staining of FFPE human lung adenocarcinoma tissue with RPN1 antibody. HIER: boil tissue sections in pH8 EDTA for 20 min and allow to cool before testing.



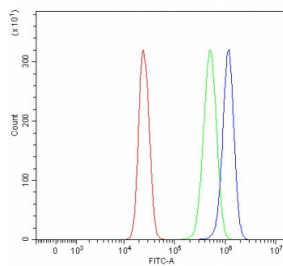
IHC staining of FFPE human placental tissue with RPN1 antibody. HIER: boil tissue sections in pH8 EDTA for 20 min and allow to cool before testing.



IHC staining of FFPE human liver cancer tissue with RPN1 antibody. HIER: boil tissue sections in pH8 EDTA for 20 min and allow to cool before testing.



Western blot testing of human 1) HeLa and 2) K562 cell lysate with RPN1 antibody. Predicted molecular weight ~68 kDa.



Flow cytometry testing of human HepG2 cells with RPN1 antibody at 1 ug/million cells (blocked with goat sera); Red=cells alone, Green=isotype control, Blue= RPN1 antibody.

Description

Dolichyl-diphosphooligosaccharide-protein glycosyltransferase subunit 1 is an enzyme that in humans is encoded by the RPN1 gene. This gene encodes a type I integral membrane protein found only in the rough endoplasmic reticulum. The encoded protein is part of an N-oligosaccharyl transferase complex that links high mannose oligosaccharides to asparagine residues found in the Asn-X-Ser/Thr consensus motif of nascent polypeptide chains. This protein forms part of the regulatory subunit of the 26S proteasome and may mediate binding of ubiquitin-like domains to this proteasome.

Application Notes

Optimal dilution of the RPN1 antibody should be determined by the researcher.

Immunogen

E. coli-derived recombinant human protein (amino acids D196-H495) was used as the immunogen for the RPN1 antibody.

Storage

After reconstitution, the RPN1 antibody can be stored for up to one month at 4oC. For long-term, aliquot and store at -20oC. Avoid repeated freezing and thawing.