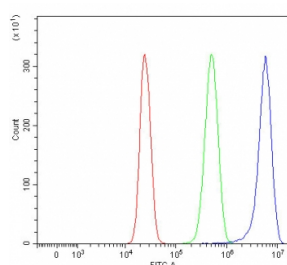


RPGRIP1L Antibody / Protein phantom (RQ7857)

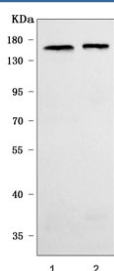
Catalog No.	Formulation	Size
RQ7857	0.5mg/ml if reconstituted with 0.2ml sterile DI water	100 ug

Bulk quote request

Availability	1-3 business days
Species Reactivity	Human, Mouse, Rat
Format	Antigen affinity purified
Clonality	Polyclonal (rabbit origin)
Isotype	Rabbit IgG
Purity	Antigen affinity purified
Buffer	Lyophilized from 1X PBS with 2% Trehalose
UniProt	Q68CZ1
Applications	Western Blot : 0.5-1ug/ml Flow Cytometry : 1-3ug/million cells Direct ELISA : 0.1-0.5ug/ml
Limitations	This RPGRIP1L antibody is available for research use only.



Flow cytometry testing of human HepG2 cells with RPGRIP1L antibody at 1ug/million cells (blocked with goat sera); Red=cells alone, Green=isotype control, Blue=RPGRIP1L antibody.



Western blot testing of 1) rat brain and 2) mouse brain tissue lysate with RPGRIP1L antibody. Predicted molecular weight ~151 kDa.

Description

The protein encoded by this gene can localize to the basal body-centrosome complex or to primary cilia and centrosomes in ciliated cells. The encoded protein has been found to interact with nephrocystin-4. Defects in this gene are a cause of Joubert syndrome type 7 (JBTS7) and Meckel syndrome type 5 (MKS5).

Application Notes

Optimal dilution of the RPGRIP1L antibody should be determined by the researcher.

Immunogen

E. coli-derived recombinant human protein (amino acids E608-D1264) was used as the immunogen for the RPGRIP1L antibody.

Storage

After reconstitution, the RPGRIP1L antibody can be stored for up to one month at 4°C. For long-term, aliquot and store at -20°C. Avoid repeated freezing and thawing.